

**DIGITAL PUBLIC
LIBRARY OF AMERICA
HAS LAUNCHED
DP.LA**

Image from the collections of the Massachusetts Historical Society. Not to be reproduced without permission.



contact:
info@dp.la
content@dp.la
@dpla

“Benjamin Sewall Blake
jumping,” 1888
Massachusetts
Historical
Society



A **PORTAL** FOR DISCOVERY



A **PORTAL** FOR DISCOVERY

A **PLATFORM** TO BUILD UPON



A **PORTAL** FOR DISCOVERY

A **PLATFORM** TO BUILD UPON

A STRONG **PUBLIC OPTION**

A **PORTAL** FOR DISCOVERY



Exhibitions

[View all »](#)



Explore by Place

[Map »](#)

A Wealth of Knowledge

from libraries, archives, and museums

Search the Library



Explore by Date

[Timeline »](#)



Apps

The DPLA is a platform. Developers make apps that use the library's data in many different ways. Here are just a few. [App Library »](#)



Library Observatory
metaLAB (at) Harvard



StackLife
Harvard Library Innovation Lab

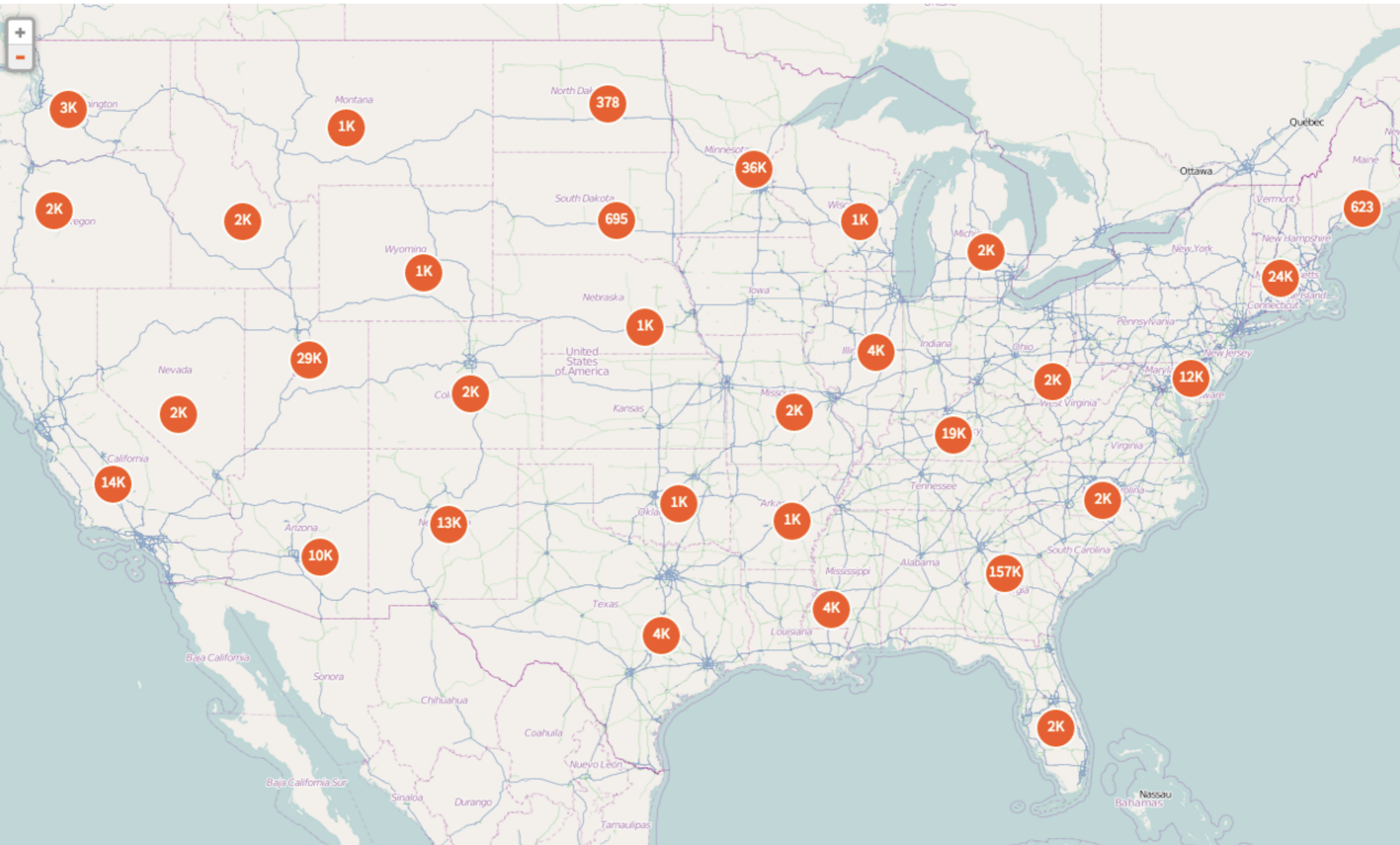
News

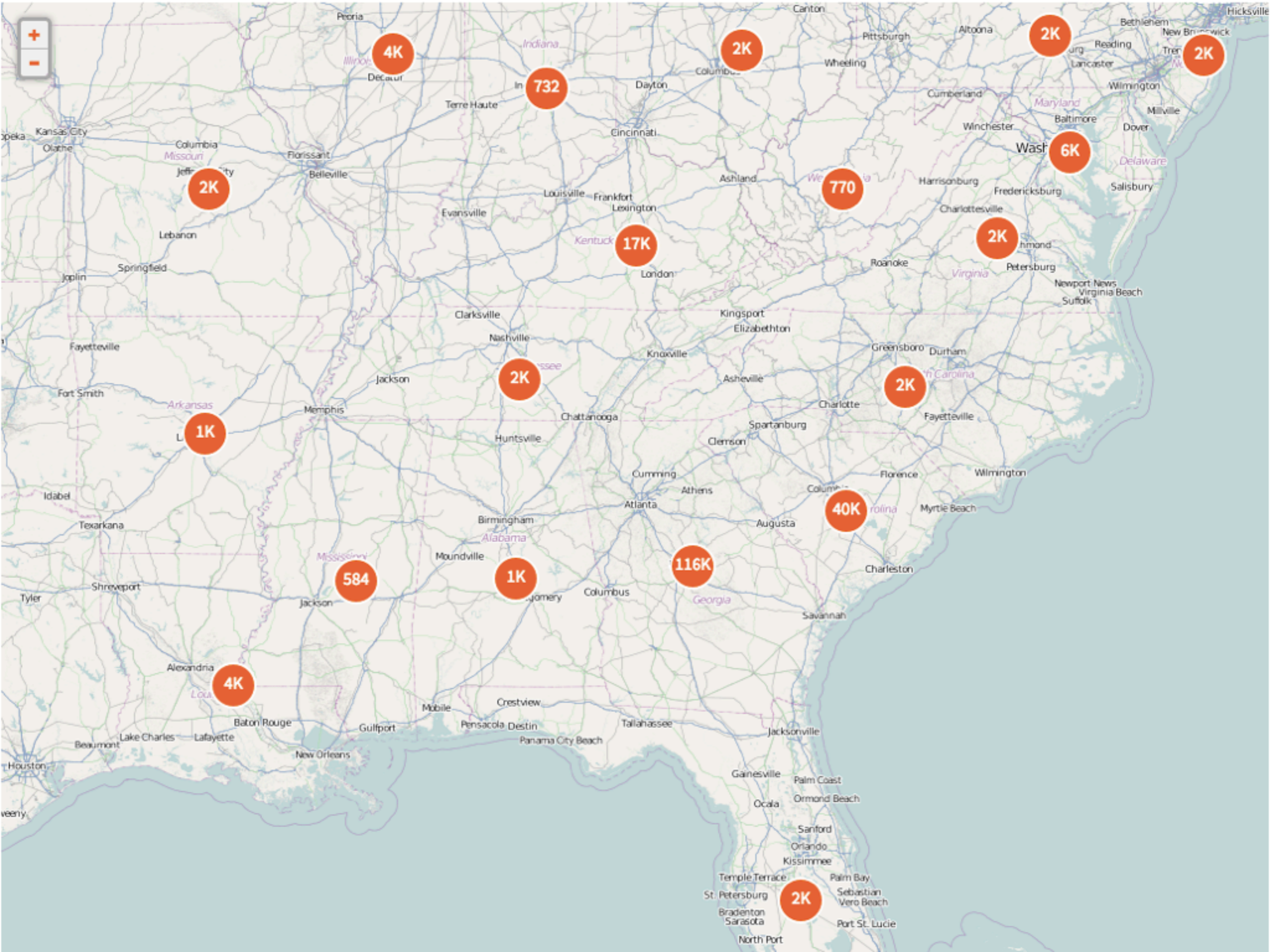


[Weekly Press Roundup: May 17](#)
May 17

[DPLA Participates in National Day of Civic Hacking, June 1 - 2, 2013](#)
May 13

[All News »](#)





4K

2K

2K

2K

732

2K

6K

17K

770

2K

1K

2K

2K

40K

1K

116K

4K

584

2K

Timeline

Your search for **chicago** returned 23,279 results.

Only results with time data are shown below.

Show >

1000 1100 1200 1300 1400 1500 1600 1700 1800 1900 2000

View: **Decades**

1820 1830 1840 1850 1860 1870 1880 1890 1900



Timeline

Your search for **chicago** returned 23,279 results.

Only results with time data are shown below.

Show >

1000 1100 1200 1300 1400 1500 1600 1700 1800 1900 2000

View: **Decades** Years

1860

Prominent Candidates for the Republican Presidential Nomination at Chicago
A. E. C

[View Object](#)



Hon. John Wentworth, Mayor Elect of Chicago, from Harper's Weekly, March 17,
1860

Winslow Homer, born Boston, MA 1836-died Prout's Neck, ME 1910

[View Object](#)



TEXT

By Format

| | |
|-----------------|-------|
| image | 11475 |
| text | 8967 |
| moving image | 52 |
| sound | 9 |
| physical object | 1 |

[More »](#)

Owning Institution

| | |
|---|------|
| National Archives at Chicago | 7351 |
| David Rumsey | 4133 |
| National Archives at College Park - Cartographic | 2014 |
| University of Illinois Urbana Champaign | 1649 |
| Smithsonian American Art Museum | 1242 |

[More »](#)

Partner

| | |
|---|-------|
| National Archives and Records Administration | 10115 |
| David Rumsey | 4133 |
| Biodiversity Heritage Library | 3577 |
| Smithsonian Institution | 1887 |

IMAGE

Chicago


Chicago (musical). Photographs

[View Object](#) 



Chicago

Walker Evans, born St. Louis, MO 1903-died New Haven, CT 1975


[View Object](#) 



IMAGE

Chicago

Chicago (musical). Photographs

[View Object](#) 



Chicago

Joseph D. Jachna, born Chicago, IL 1935

[View Object](#) 



Chicago

Joseph Vavak, born Vienna, Austria-Hungary 1891-died United States 1969





Activism in the U.S.



America's Great Depression and Roosevelt's New Deal



Boston Sports Temples



Bread and Roses Strike of 1912: Two Months in Lawrence, Massachusetts, that Changed Labor History



History of Survivance: Upper Midwest 19th Century Native American Narratives



Indomitable Spirits: Prohibition in the United States



Leaving Europe: A new life in America



This Land Is Your Land: Parks and Public Spaces

This Land Is Your Land: Parks and Public Spaces

[Themes](#)

Building the Parks

The idea of setting aside green spaces as parks is not a recent idea, but in the second half of the 19th century the idea of creating and protecting some areas of the country as places that could be preserved on a grander scale expanded into something bigger. In the 20th century, the policies and management of these protected areas inspired a nation while at the same time helping to set a foundation for parks around the world.

What started off as a landscape turned into a place where roads, visitor centers, research centers, and other facilities were needed to maintain the integrity of these areas. The creation of the parks was not based just on the physical layout, but the political and managerial aspects as well that were need to decide what land the parks would maintain and how that would be done on such a large scale.



WHERE DOES THE **CONTENT**
COME FROM?

CONTENT AND SERVICE **HUBS**

CONTENT HUBS



Smithsonian

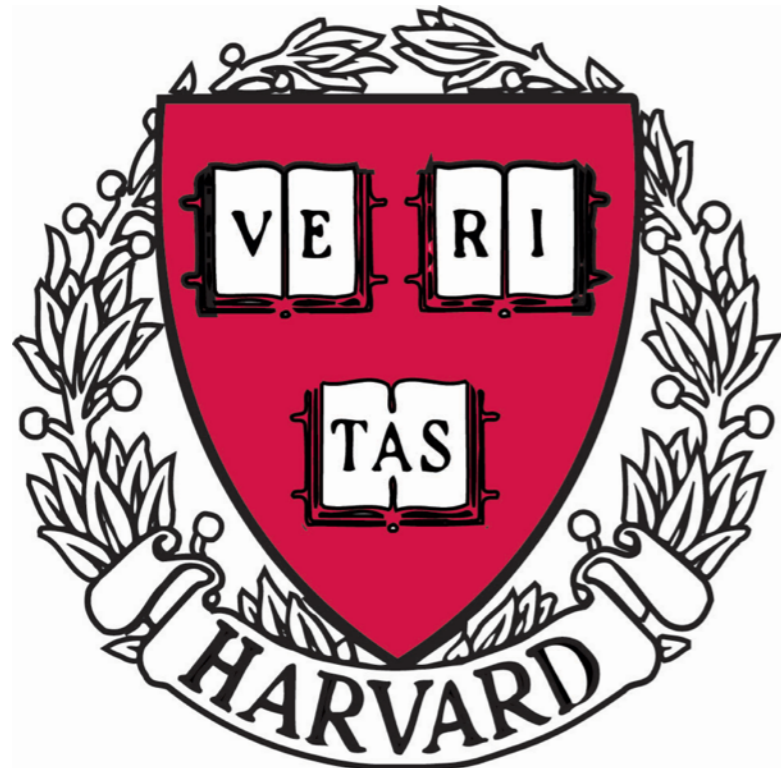


New York
Public
Library

HATHI
TRUST



digital library

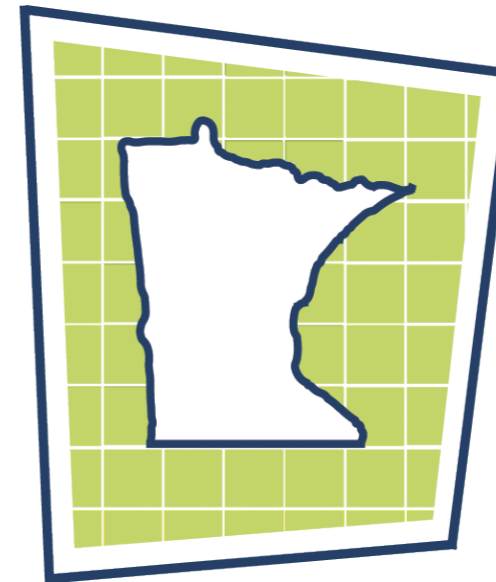


A R T S T O R

SERVICE HUBS



DIGITAL
LIBRARY *of* GEORGIA
SHARING GEORGIA'S HISTORY AND CULTURE ONLINE



Minnesota Digital Library



Goodhue County Historical Society

GCHS Photo Album

The Goodhue County Historical Society has an extensive photograph collection. Here are a few examples for you to enjoy. We also invite you to come to the history center to see these and other photographs first hand. Most photographs are in the archives, but we have copies available for anyone to examine. There are also many photographs on view in the exhibits throughout the history center.



[Early County Photos](#)



[Discontinued Post Offices and Ghost Towns](#)



[Schools](#)



[Sports and Recreation](#)



[Summer Time](#)



[Barns](#)



Search

Search

[Advanced Search](#)

Minnesota Reflections

All Collections

American Swedish Institute

The American Swedish Institute, a historic museum dedicated to the celebration of Swedish culture, is home to collections on the history of Swedish immigration to the United States, particularly immigration to Minnesota, Swedish-American life and culture and the history and culture of Sweden as it has influenced Swedish America. The... [more...](#)



Amherst H. Wilder Foundation

The Amherst H. Wilder Foundation is a non-profit health and human services organization founded by a philanthropic Saint Paul businessman, Amherst H. Wilder and his family. For more than 100 years, Wilder has combined direct service, research, and community development to address the needs of the most vulnerable people in greater Saint... [more...](#)



Anoka County Historical Society

The Anoka County Historical Society, in Anoka, Minnesota, collects photographs, printed materials and artifacts related to Anoka County. The society supports genealogical research with a wide range of historical resources. Images Anoka County Historical Society contributed to *Minnesota Reflections* show early street scenes, business... [more...](#)



Baptist General Conference History Center

The work of the Baptist General Conference History Center was established in 1898. Located on the campus of Bethel University, the BGCHC collects, preserves and disseminates materials significant to Swedish Baptist institutional, cultural, and immigration history; the Baptist General Conference; and Bethel University. The images... [more...](#)



About the collections

Minnesota Reflections, which is more than 10 years old, is a project of the Minnesota Digital Library. The collection brings you more than 135,000 images, maps and documents from more than 150 of the state's cultural heritage organizations. This site offers resources on Minnesota's history and geography for researchers, educators, students, and the public. We add collections and items throughout the year so check back often.



Tutorials

- [Browsing & Searching](#)
- [Viewing an Object](#)
- [Special Features](#)
- [Advice on Newspapers](#)
- [Saving a Personal Collection Using Favorites](#)

Minnesota Digital Library

Current funding for *Minnesota Reflections* comes from the Arts & Cultural Heritage Fund of the Clean Water, Land and Legacy Amendment to the state's constitution. It is also supported by the time and talent of the participants in the Minnesota Digital Library.

PONDS → LAKES → **OCEAN**

[« back to search results](#)

Search the Library



Street fair hot air balloon ascension, Red Wing, Minnesota

Save To...

Share



| | |
|---------------------------|--|
| Created Date | 1885 - 1890 |
| Provider | Minnesota Digital Library |
| Owning Institution | Goodhue County Historical Society, 1166 Oak Street, Red Wing, Minnesota 55066; http://www.goodhuehistory.mus.mn.us |

Created Date
1885 - 1890

[View on timeline »](#)



[View Object](#)

Description

People are shown gathered for a hot air baloon ascension at a street fair in Red Wing, Minnesota.

| | |
|-----------------|--|
| Location | Red Wing, Goodhue, Minnesota, United States |
| Format | Black-and-white photographs |
| Type | image |
| Subject | Festivals Hot air balloons Street Fair Crowds Buildings Balloons (Aircraft) Hats |
| Rights | This image may not be reproduced for any reason without the express written consent of the Goodhue County Historical Society. |
| URL | http://reflections.mndigital.org/u/?good.270 |



Lake Superior, Minnesota North Shore

[Home](#)

[Browse Goodhue County Historical Society](#)

[User Guides](#)

[Newspapers](#)

[Favorites](#) | [? Help](#)

Search

[Search](#)

[Advanced Search](#)

[Home](#) >> [Goodhue County Historical Society](#) >> **Street fair hot air balloon ascension, Red Wing, Minnesota**

[Reference URL](#)

[Share](#)

[Add tags](#)

[Comment](#)

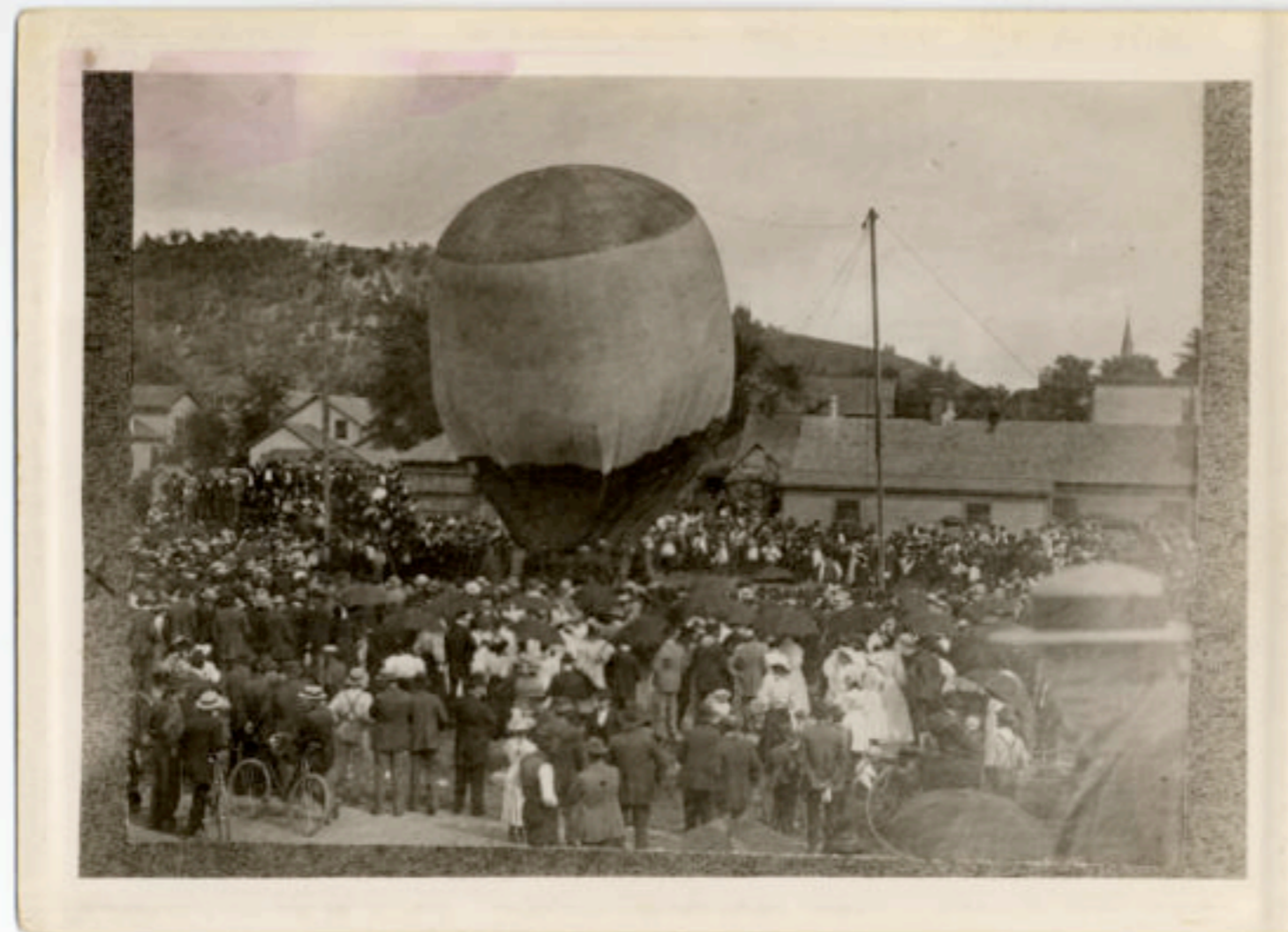
[Save to favorites](#)

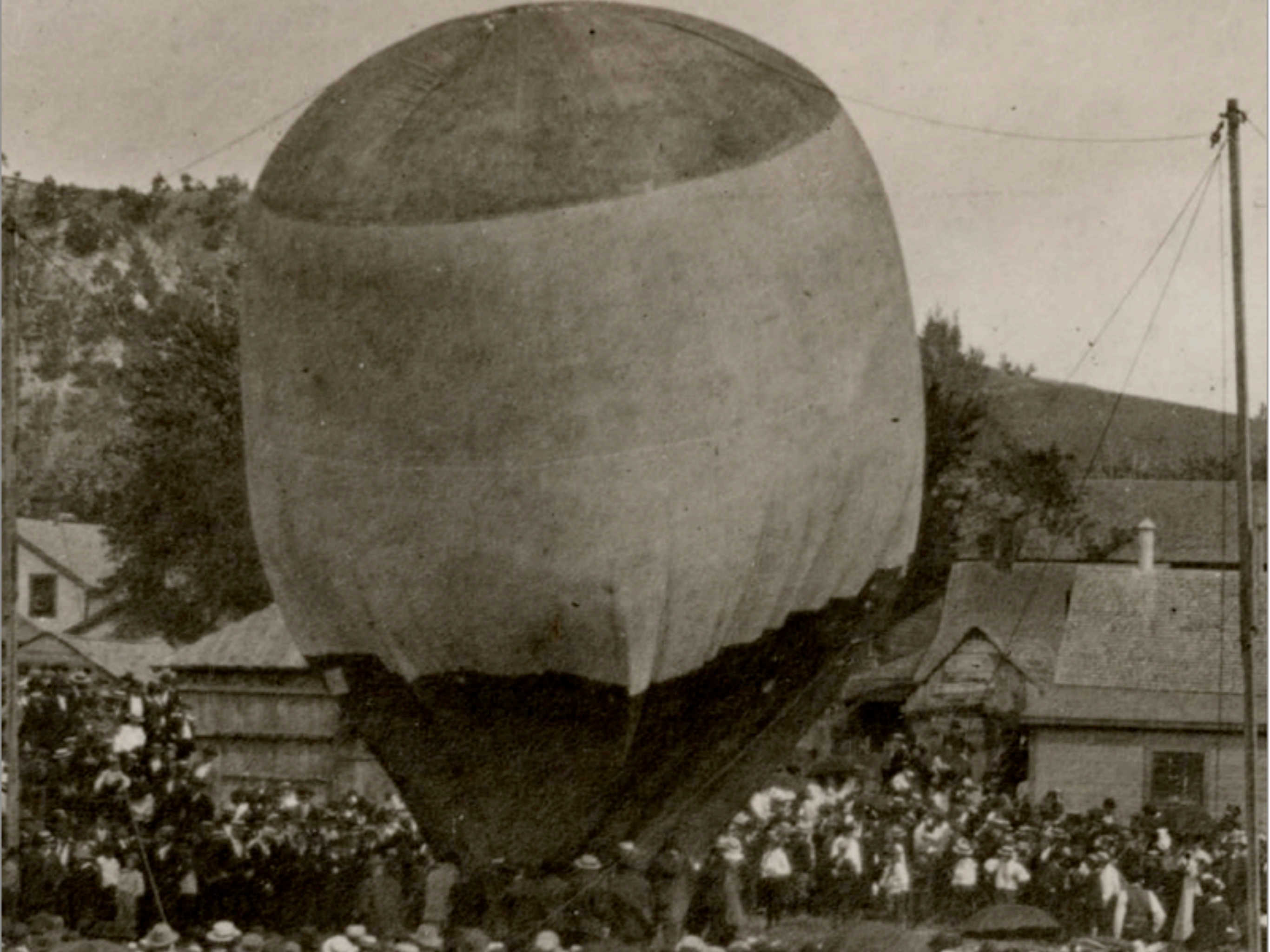
Street fair hot air balloon ascension, Red Wing, Minnesota

[View Description](#)

[Download](#)

[Print](#)





Refine

By Format

| | |
|-------|----|
| image | 70 |
| text | 5 |

Owning Institution

| | |
|--|----|
| National Archives at College Park - Still Pictures | 42 |
| University of Nevada, Reno, University Libraries | 10 |
| Brigham Young University - Harold B. Lee Library | 4 |
| University of Utah - J. Willard Marriott Library | 3 |
| Hennepin County Library, James K. Hosmer Special Collections Library, 300 Nicollet Mall, Minneapolis, MN 55401 http://www.hclib.org | 3 |

[More »](#)

Partner

| | |
|--|----|
| National Archives and Records Administration | 42 |
| Mountain West Digital Library | 17 |
| Minnesota Digital Library | 9 |

IMAGE

Hot air balloon

Photo of a hot air balloon at a ski resort

[View Object](#) 



IMAGE

Aerial over campus from a hot air balloon

Danna-Douglas, Theresa

Aerials over campus, during the Balloon Races on Media Day, shot from a hot air balloon.

[View Object](#) 



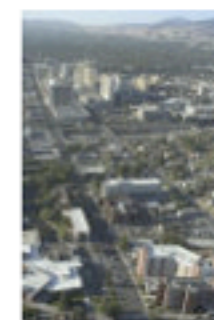
IMAGE

Aerial over Reno from a hot air balloon

Danna-Douglas, Theresa

Aerial over Reno, during the Balloon Races on Media Day, shot from a hot air balloon, view of city of Reno, looking south.

[View Object](#) 



IMAGE

Aerial over Reno from a hot air balloon

Danna-Douglas, Theresa

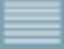


Aerials over Reno, during the Balloon Races on Media Day, shot from a hot air balloon.

[View Object](#) 



A **PLATFORM** TO BUILD UPON

FREE **DATA**

View:   

Search the Library



For Developers

[API](#)

[Bulk Download](#)

[Fall 2012 DPLA Appfest](#)

[Sample Code and Libraries](#)

[Summer 2011 Beta Sprint](#)

Search this site



Bulk Download

All DPLA data in the DPLA repository is available for download as zipped json files. These include the standard DPLA fields, as well as the complete record received from the partner.

Complete Repository

[Download the complete repository](#) (708 MB)

Data from Individual Partners

[ARTstor](#) (3 MB)

[Biodiversity Heritage Library](#) (25 MB)

[Clemson University](#) (550 KB)

[David Rumsey Historical Map Collection](#) (9 MB)

[Digital Commonwealth](#) (6 MB)

[Digital Library of Georgia](#) (15 MB)

[Harvard University](#) (4 MB)

[Internet Archive](#) (42 MB)

[Kentucky Digital Library](#) (15 MB)

[Minnesota Digital Library](#) (9 MB)

[Mountain West Digital Library](#) (253 MB)

[National Archives and Records Administration](#) (145 MB)

[New York Public Library](#) (2 MB)

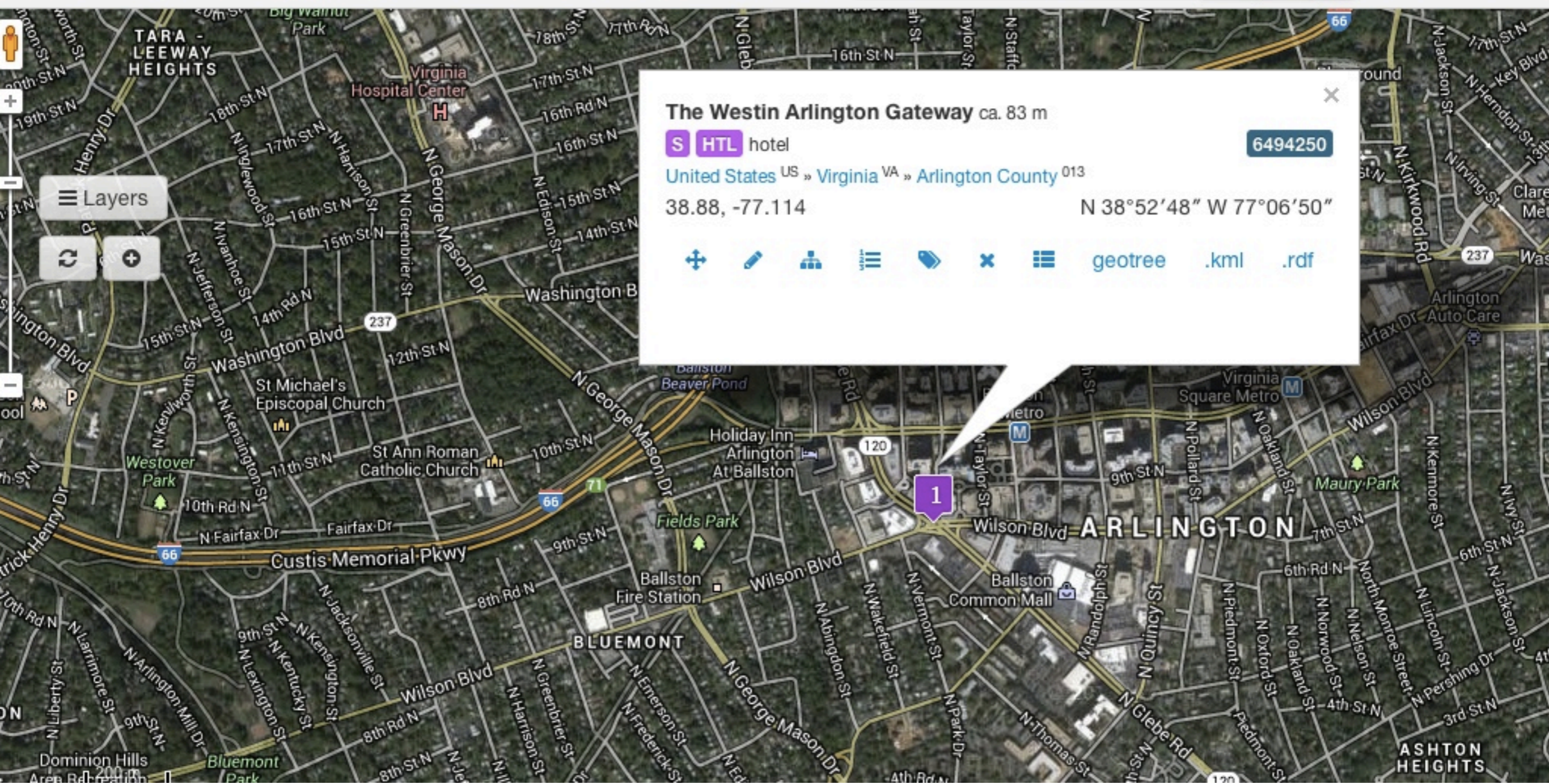
[South Carolina Digital Library: College of Charleston](#) (3 MB)

[South Carolina Digital Library: University of South Caroline](#) (6 MB)

[The Smithsonian Institution](#) (163 MB)

[University of Illinois at Urbana-Champaign](#) (4 MB)

Future Directions: **LINKED OPEN DATA**



The Westin Arlington Gateway ca. 83 m
S HTL hotel 6494250
United States US » Virginia VA » Arlington County 013
38.88, -77.114 N 38°52'48" W 77°06'50"
geotree .kml .rdf

geonames.org/6494250

<record>

...

<dc:subject>

United States. Navy--History--World War,
1939-1945.;

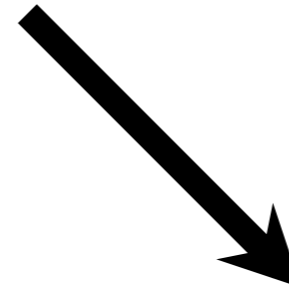
World War, 1939-1945--Naval operations,
American.;

World War, 1939-1945--Pictorial works.

</dc:subject>

...

<record>



<http://id.loc.gov/authorities/subjects/sh85140937>

<http://id.loc.gov/authorities/subjects/sh85148452>

<http://id.loc.gov/authorities/subjects/sh85148467>

INTEROPERABLE **DATA**

EDM + DPLA
MAP



europaena
think culture

Rights Statements

THE **API**: ACCESS TO
MILLIONS OF ITEMS,
FOR ANY PURPOSE

OpenPics



AT&T 8:12 AM 79%

Enter search terms...

Source: Digital Public Library of America

- Currently Popular Images
- New York Public Library
- Library of Congress
- California Digital Library
- Digital Public Library of Ame...
- Europeana
- LIFE Magazine
- National Library of Australia...
- Flickr Commons Project
- Your Favorites

A screenshot of the OpenPics mobile application interface. At the top, there is a search bar with the placeholder text "Enter search terms...". Below the search bar, the source is identified as "Source: Digital Public Library of America". The main content area displays a grid of various historical images, including maps, portraits, and photographs. A filter menu is overlaid on the grid, listing several sources: "Currently Popular Images", "New York Public Library", "Library of Congress", "California Digital Library", "Digital Public Library of Ame...", "Europeana", "LIFE Magazine", "National Library of Australia...", "Flickr Commons Project", and "Your Favorites". The app's status bar at the top shows "AT&T", the time "8:12 AM", and a battery level of "79%".

Kentucky



Source: Digital Public Library of America



CULTURE COLLAGE

←
Digital Public Library of America Keywords

Infinite Scroll?





Welcome to StackLife for the DPLA

StackLife demonstrates one way a group independent of the Digital Public Library of America can create its own way of browsing its collection, using the information made openly available by the DPLA. In this early version, you can browse a superset of books from the Hathi Trust and the Open Library that have been gathered by the DPLA.

StackLife shows you a book in the shelf it would be on in a physical library. The darker the blue the more often the book has been accessed. The book's thickness reflects the number of pages. The longer the book, the longer ago it was published.

When you click on a book, StackLife shows you the subjects under which it's been classified by librarians. Click on a subject and now you'll see the other works in that category.

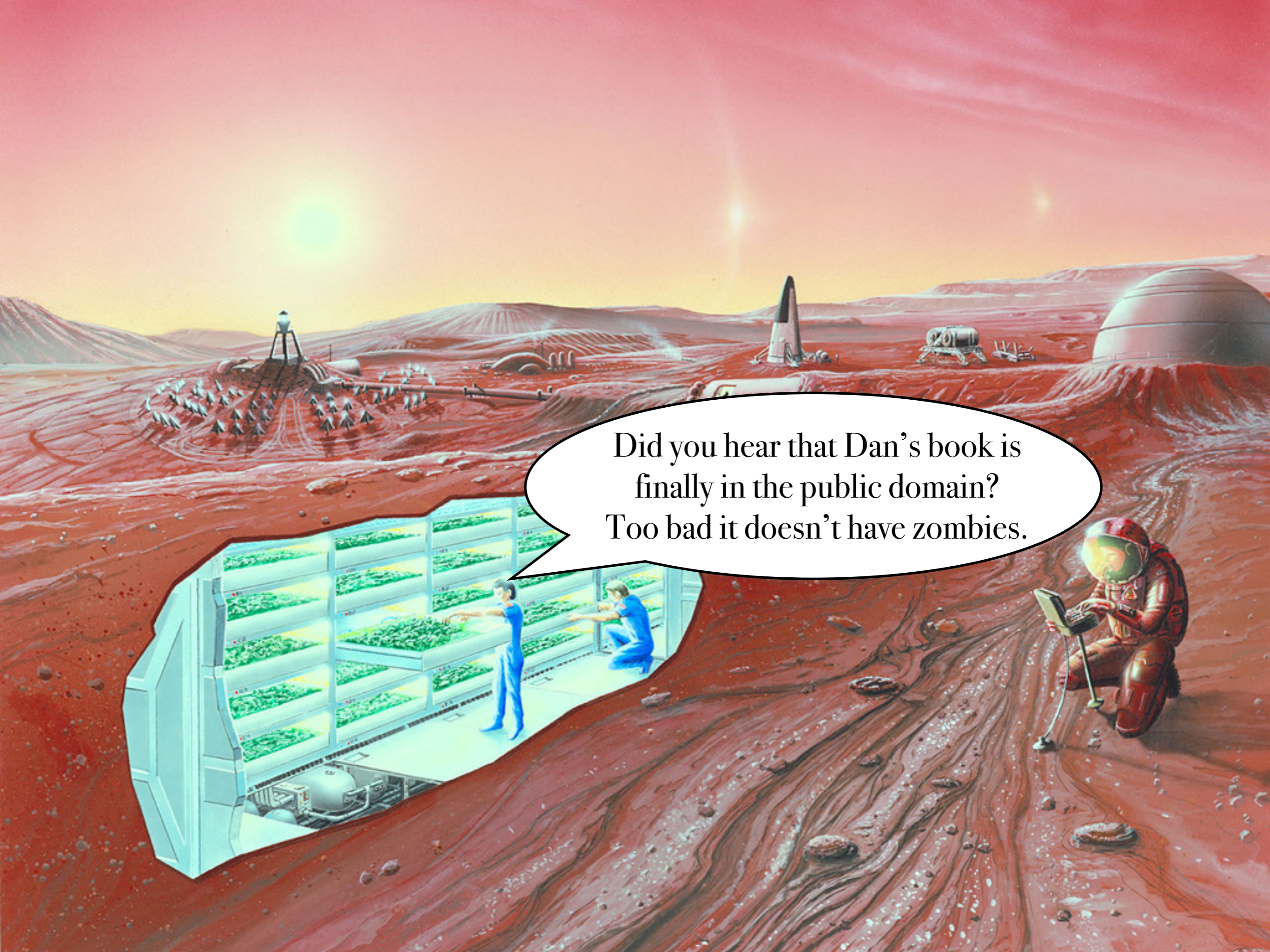
StackLife was created by [Harvard's Library Innovation Lab](#). Check our [Frequently Asked Questions](#) for more information. And here is our [privacy policy](#).

A STRONG **PUBLIC OPTION**

CARNEGIE LIBRARY, RIPON, WIS.







Did you hear that Dan's book is finally in the public domain? Too bad it doesn't have zombies.

Library License

LIBRARY LICENSE CONCEPT

Library License is a tool to grant public non-commercial online access to copyrighted material. Library Licensed works will be served over a secure, rights managed platform provided by libraries.

Content producers could add a Library License to the terms of their publishing contracts.

Here's a sketch of the process.

LICENSES



After 5 years, full digital rights are granted to libraries



Immediate digital rights granted concurrently with commercial launch

INSTITUTIONAL CARVE-OUTS

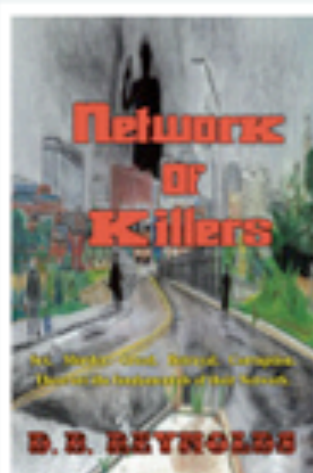


After 5 years, full digital rights are granted to the Digital Public Library of America

unglue (v. t.) 3. To make it clearly legal for a digital book to be used, distributed, archived and preserved by libraries.

[Learn More](#)

Active Campaigns



NETWORK OF KILLERS
D. B. Reynolds



Radio Francais
Nancy Boulicault



Feeding the City
Sara Roncaglia



Start Ungluing Now!

Username

Email

Password

Password (again):

sign up >

 Sign Up With Google

Already Unglued



News

De Gruyter to work with Unglue.it: Wish for your favorites!

Latest Ungluing

 IvonneGonzalez wished

SCANNEBAGOS



**NATIONAL NETWORK, LOCAL IMPACT,
GLOBAL REACH**

MORRIS, MINNESOTA

[Web](#) [Images](#) [Maps](#) [Shopping](#) [More ▾](#) [Search tools](#)

About 44,600,000 results (0.20 seconds)

[Morris, Minnesota - Wikipedia, the free encyclopedia](#)

en.wikipedia.org/wiki/Morris,_Minnesota ▾

The town is home to the University of **Minnesota Morris** (UMM), part of the University of **Minnesota** system. The first buildings on campus were constructed in ...

[Geography](#) - [Demographics](#) - [University of Minnesota Morris](#)

[Morris, Minnesota | It starts here.](#)

www.morriismntourism.com/ ▾

Morris Area Chamber of Commerce City of **Morris, Minnesota** Stevens County Economic Improvement Commission, Inc **Morris Minnesota** Tourism ...

[University of Minnesota, Morris](#)

www.morris.umn.edu/ ▾

University of **Minnesota Morris** offers a small, close-knit campus with the power of a world-renowned research University system.

[Webmail](#) - [Student One Stop](#) - [Admissions](#) - [Academics](#)

[Images for morris minnesota](#) - Report images



[Information on Morris Minnesota](#)

www.morriismn.info/ ▾

Information for newcomers to **Morris Minnesota**. ... **Morris, Minnesota** is a small noisy town in western Minnesota with a population of around 5600 people. Morris ...

[Morris, Minnesota \(MN 56267\) profile: population, maps, real estate ...](#)

www.city-data.com/city/Morris-Minnesota.html ▾

Morris, Minnesota detailed profile. ... Click here for promotion details and to upload your **Morris, Minnesota** photos. OSM Map; General Map; Google Map; MSN ...



Morris

Town in Minnesota

Morris is a town in Stevens County, Minnesota, United States. The population was 5,286 at the 2010 census. It is the county seat of Stevens County. The town is home to the University of Minnesota Morris, part of the University of Minnesota system. [Wikipedia](#)

Area: 4.5 sq miles (11.65 km²)

Weather: 68°F (20°C), Wind NE at 4 mph (6 km/h), 68% Humidity

Population: 5,265 (2011)

Local time: Sunday 8:54 AM

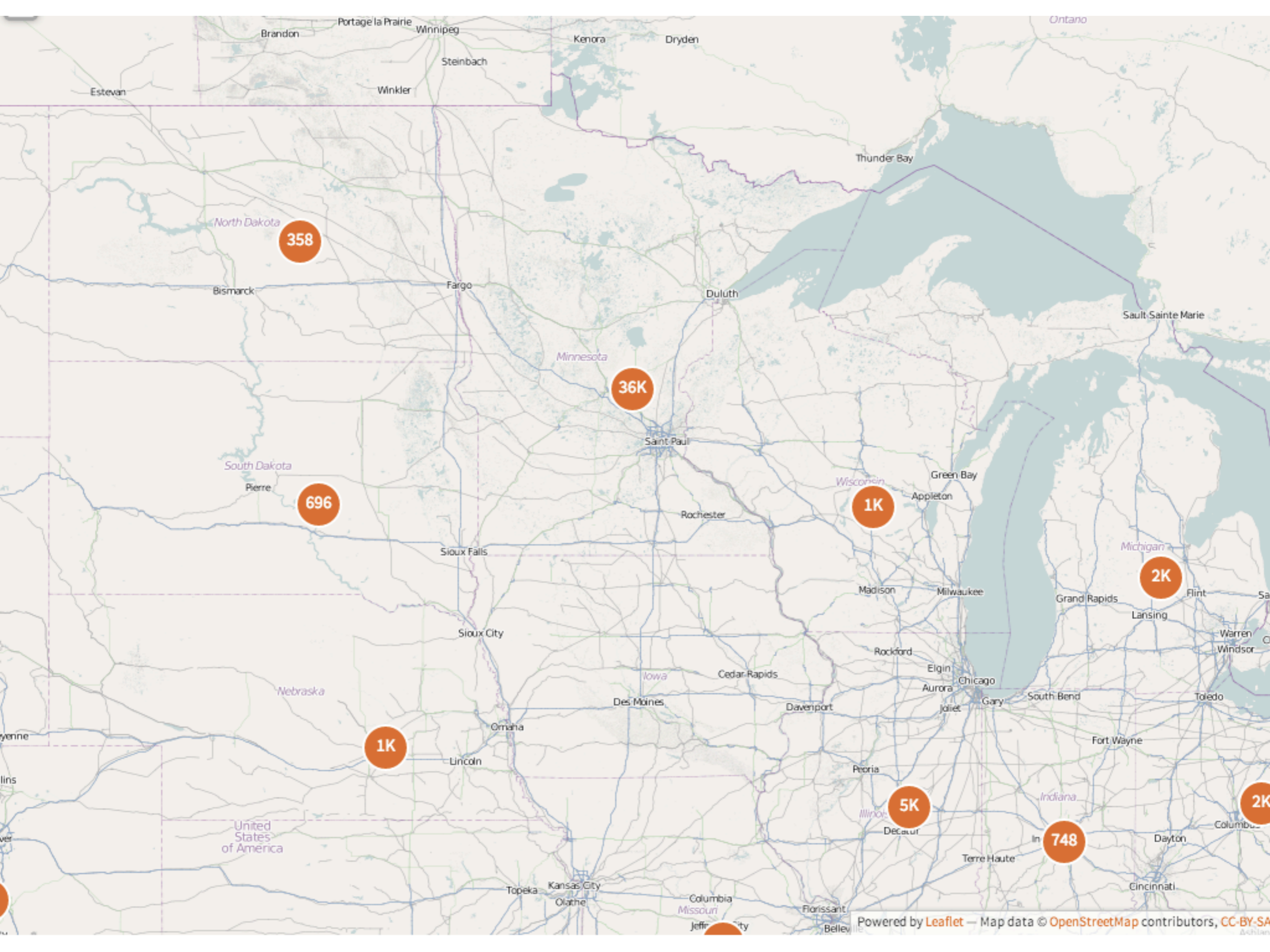
[Feedback](#) / [More info](#)

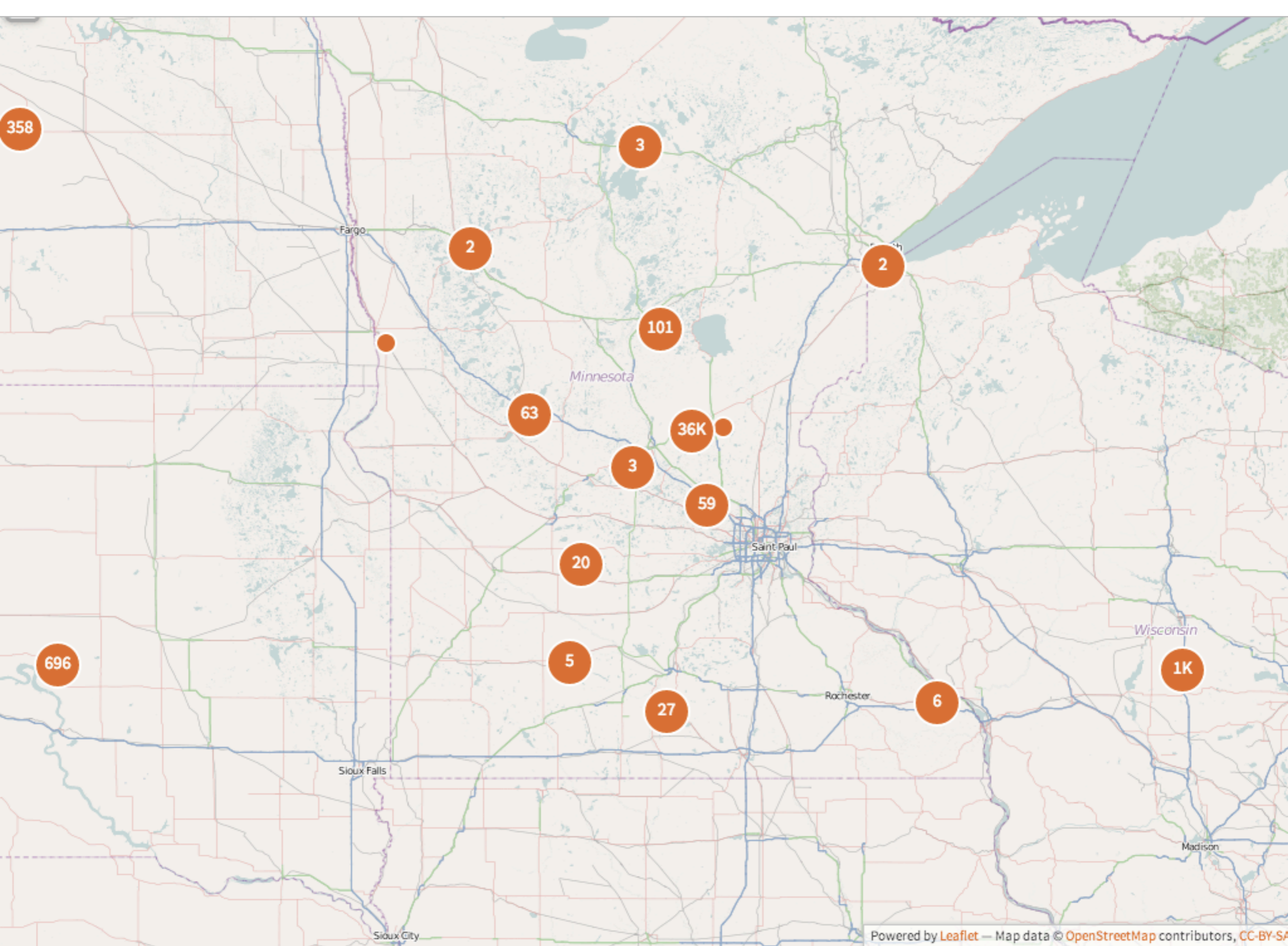
See results about



[University of Minnesota, Morris](#)

University of Minnesota Morris is a public liberal arts college and a ...





Morris, Stevens, Minnesota, United States

IMAGE

West Central School of Agriculture, Morris, Minnesota



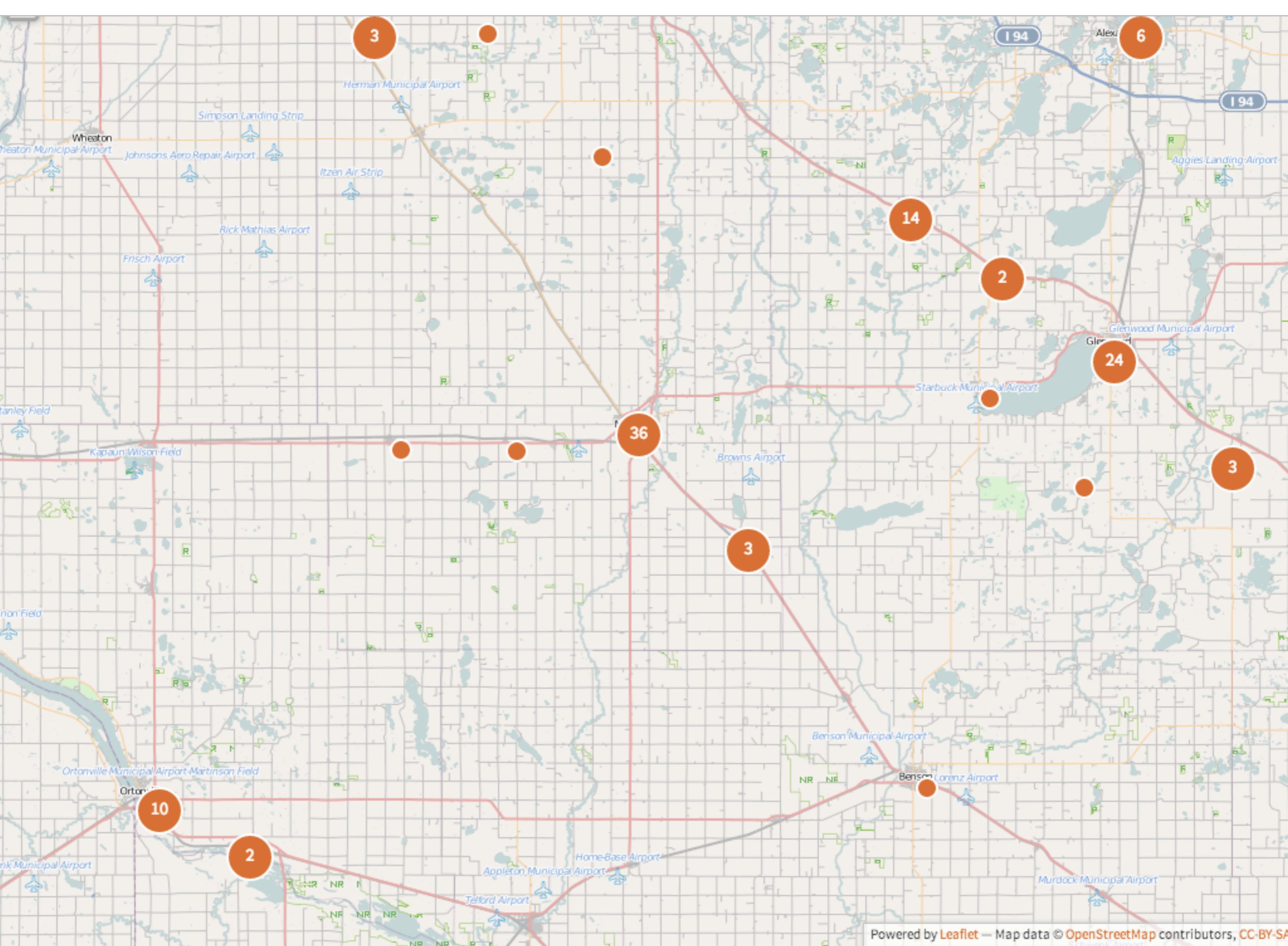
[View Object](#)

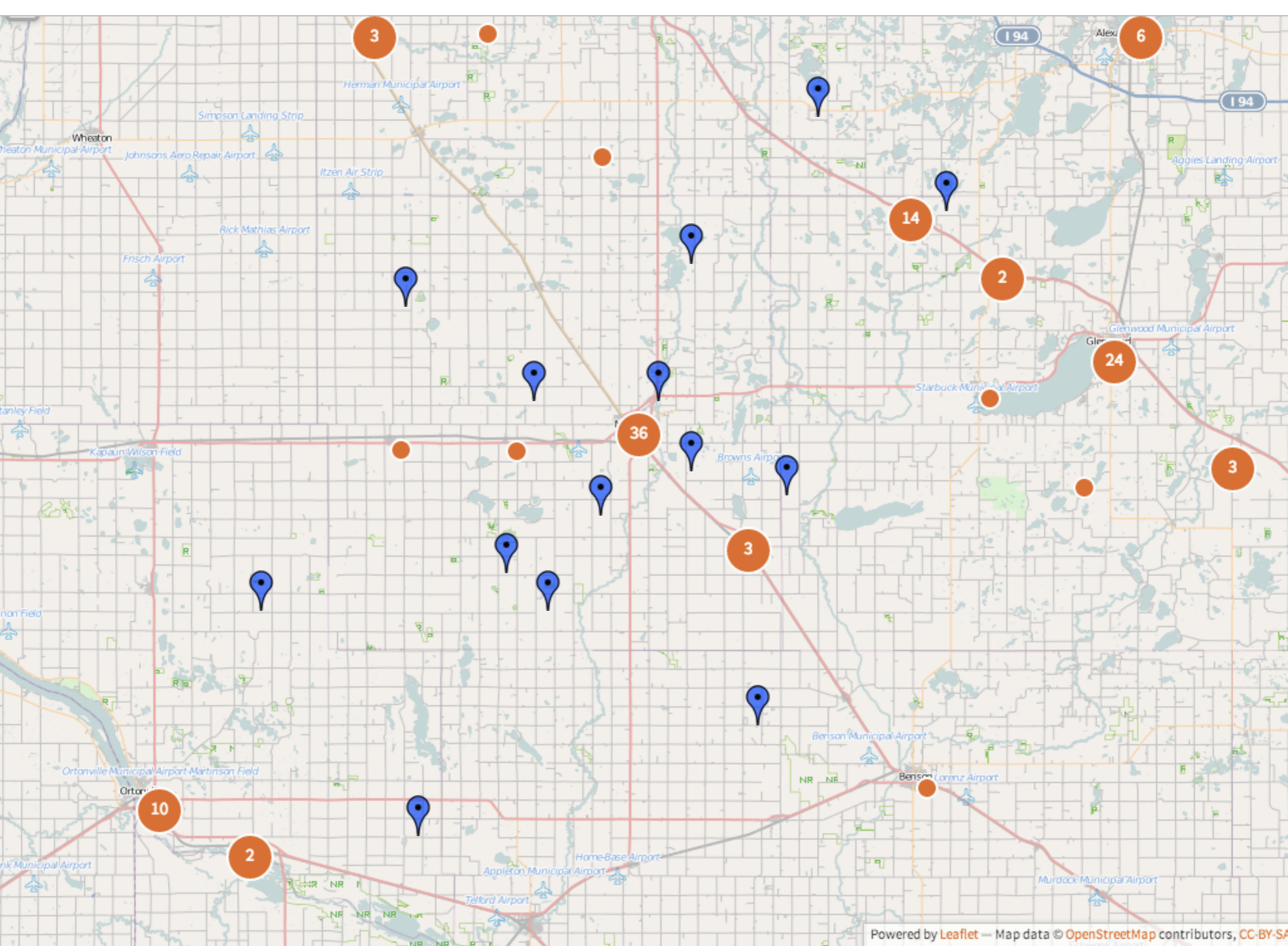
IMAGE

Fred Tomlin Farm, Morris, Minnesota



[View Object](#)





MORRIS, MINNESOTA



Verizon 2:38 PM 80%

Morris Minnesota

Source:
Digital Publi...ry of America





A **PORTAL** FOR DISCOVERY

A **PLATFORM** TO BUILD UPON

A STRONG **PUBLIC OPTION**



DP.LA

Contact:

emily@dp.la

@dpla

@ncschistory