



Don't Know What You Got (Till It's Gone): Stewarding Digital Geospatial Data



Butch Lazorchak
National Digital Information Infrastructure and
Preservation Program
Library of Congress

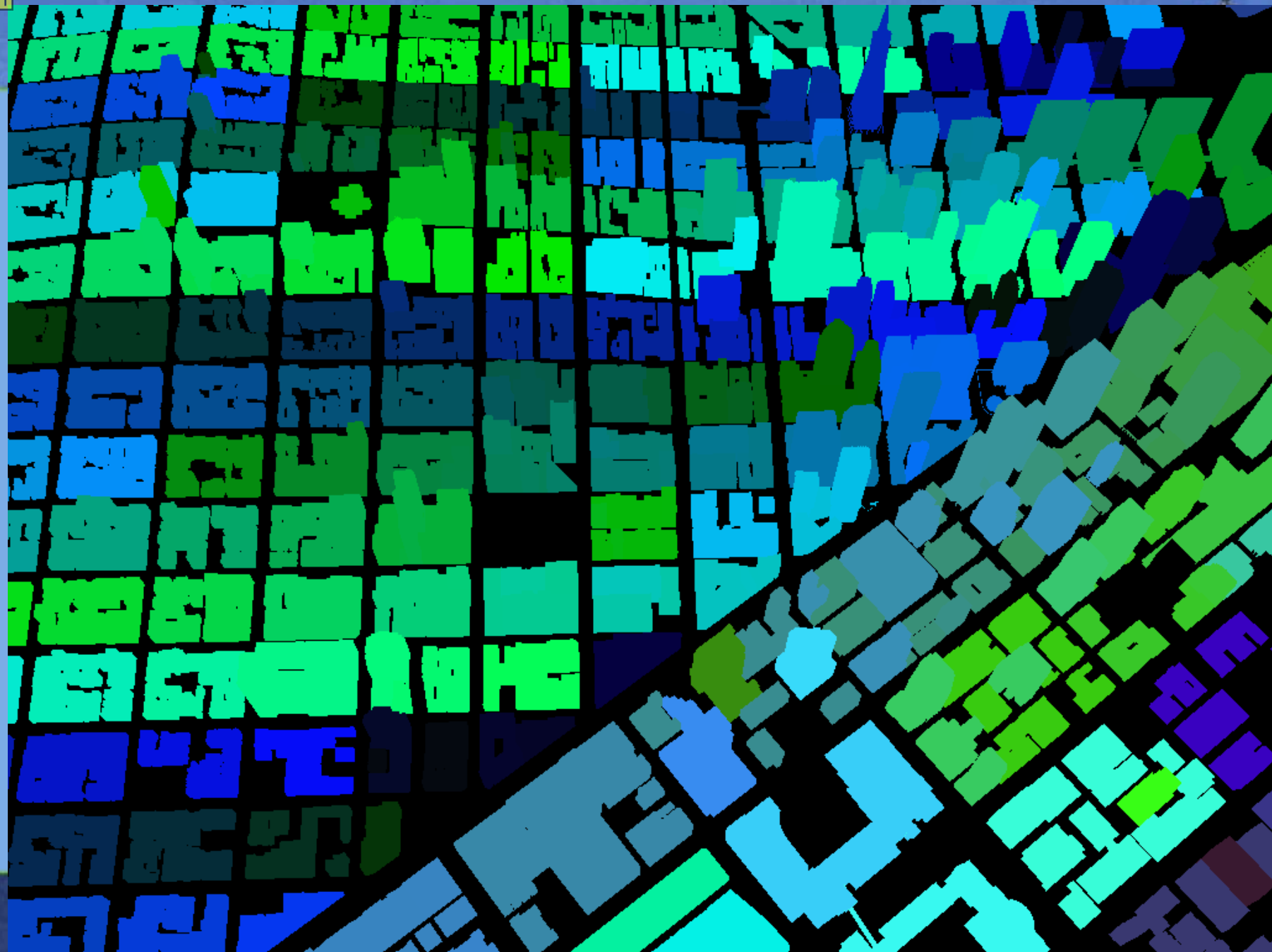






Don't know what you got till it's gone
Don't know what it is I did so wrong
Now I know what I got
It's just this ~~song~~ **historic digital geo-**
spatial data
And it ain't easy to get back
Takes so long








his map tile
e served at
oment.

Sorry! This map tile
cannot be served at
the moment.

Sorry! This map tile
cannot be served at
the moment.

The page at <http://wheresthepath.googlepages.com> says:

 I'm sorry, but this site will not be able to display any more OS maps today (due to an OS imposed limit of 30000 map tile fetches per day). Please try visiting again tomorrow. There is now a fall-back site using the Multimap open API at wheresthepath.googlepages.com/wtp2.htm

OK

Route length

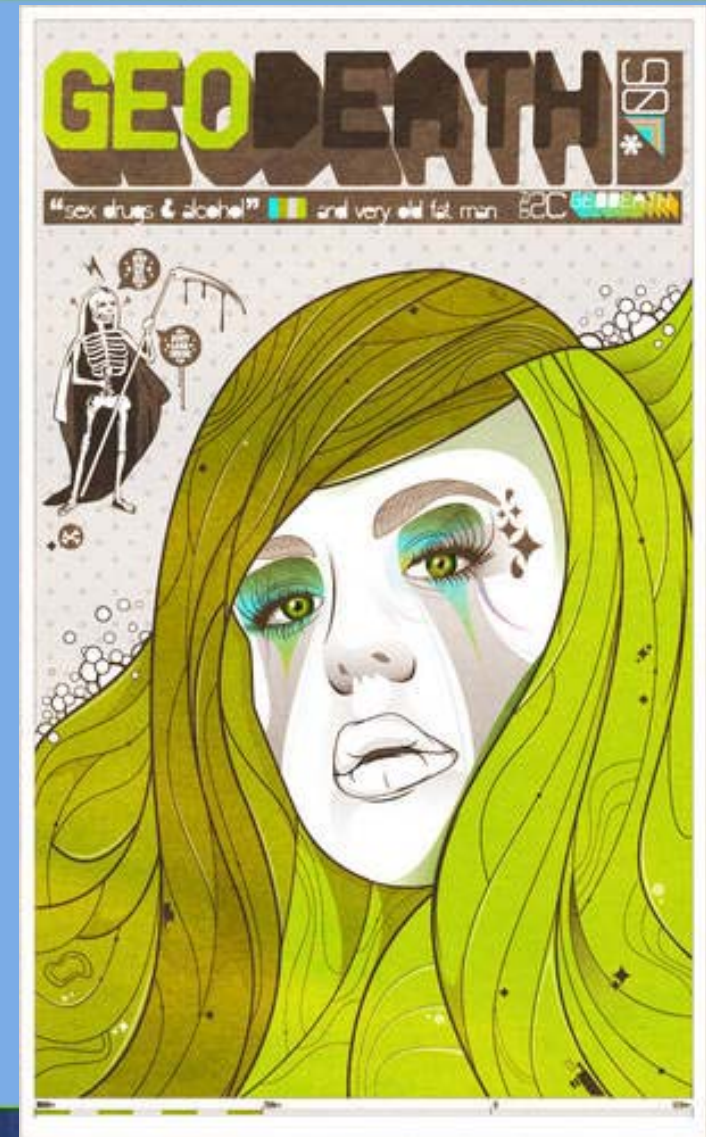
GPX

1000 ft



What are the Special Risks to Geospatial Information?

- Unique geospatial data formats
- Spatial database complexity
- Fragility and uncertainty surrounding digital cartographic representation

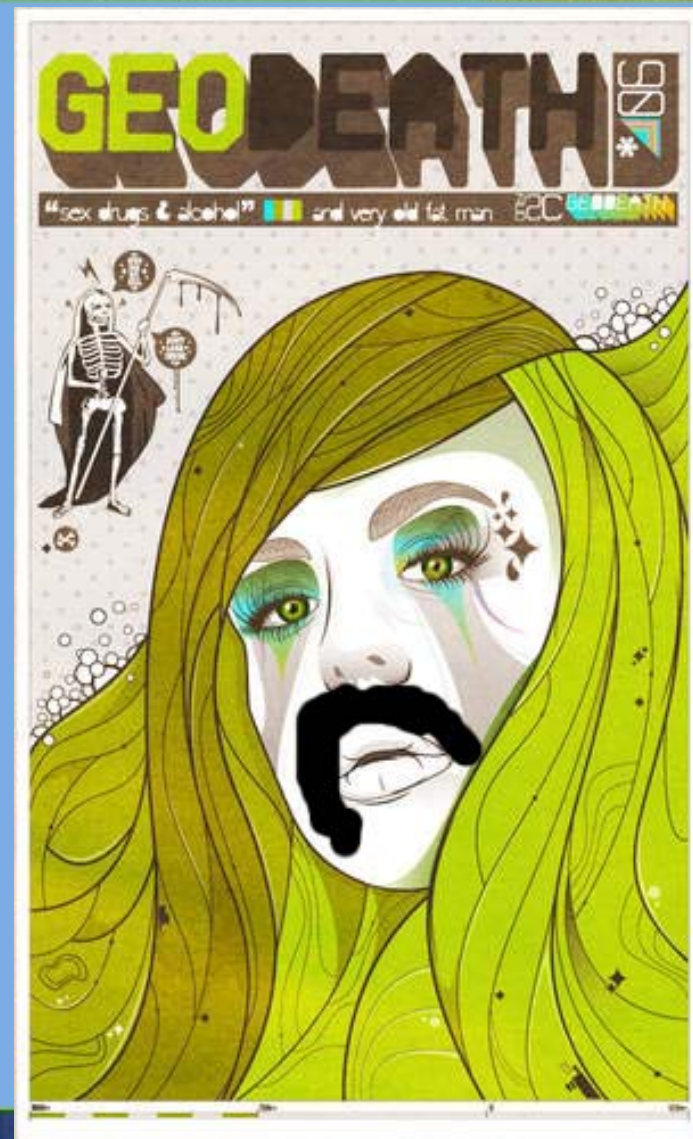




Even MORE Special Risks to Geospatial Information?



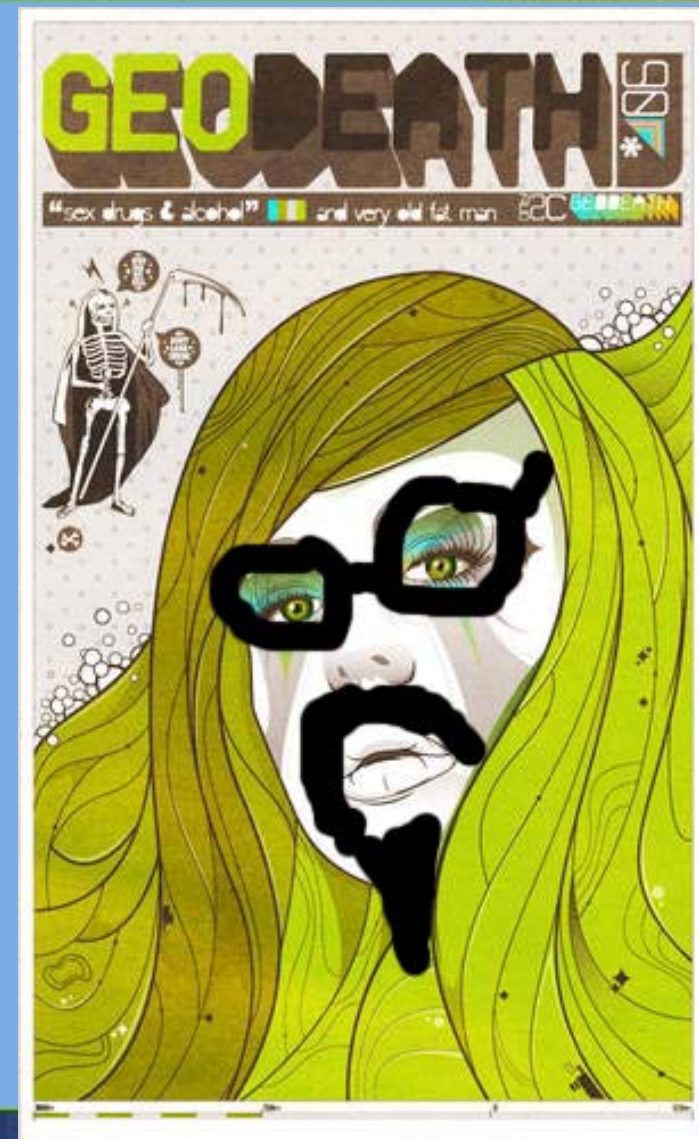
- Issues related to time-versioned content
- Metadata unavailability or inconsistency






Even MORE Special Risks to Geospatial Information?

- No generally supported content packaging design for complex geospatial data





Acceso difícil
pero no imposible







Benefits!

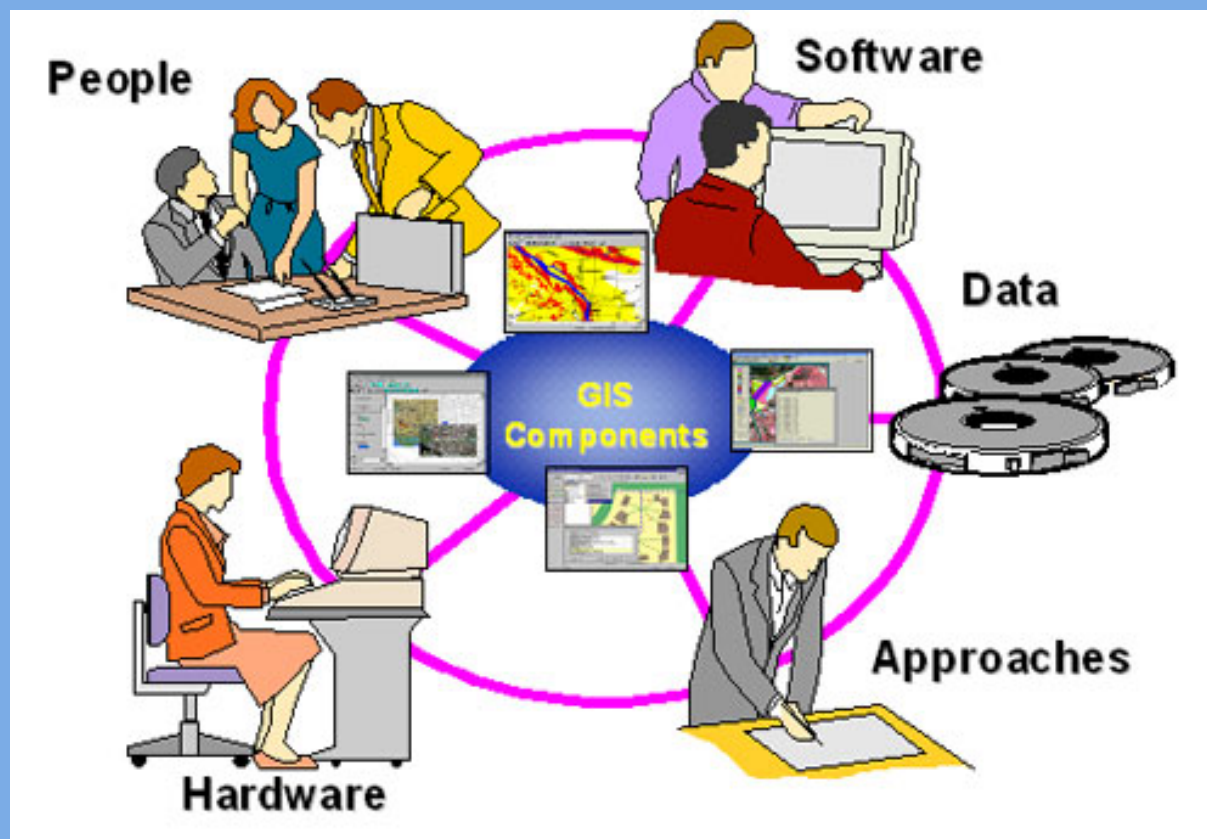


- eDiscovery
- Legal Mandate
- Maximize Investment
- Generate Revenue
- Save Money
- Avoid Costs
- Document Business Processes for Improved Decision-Making
- Improve Information Sharing and Access
- Provide Historical Cultural Heritage Evidence
- Spur Information System Modernization
- Document Environmental Change and Impact
- Demographic Trends



Collaboration

<http://www.flickr.com/photos/nationaalarchief/3586139080/>





Repository of the Past?



Predictor of the future?



NDSA%



Resources:



- DigitalPreservation.gov
- Geomapp.net
- GeoPreservation.org
- FGDC Users/Historical Data Working Group:
<http://www.fgdc.gov/participation/working-groups-subcommittees/hdwg>
- DPC Technology Watch Report *Preserving Geospatial Data*:
http://www.dpconline.org/component/docman/doc_download/363-preserving-geospatial-data-by-guy-mcgarva-steve-morris-and-gred-greg-janee
- National Digital Stewardship Alliance:
<http://www.digitalpreservation.gov/ndsa>



Resources:



- DigitalPreservation.gov
- Geomapp.net
- GeoPreservation.org
- FGDC Users/Historical Data Working Group:
<http://www.fgdc.gov/participation/working-groups-subcommittees/hdwg>
- DPC Technology Watch Report *Preserving Geospatial Data*:
http://www.dpconline.org/component/docman/doc_download/363-preserving-geospatial-data-by-guy-mcgarva-steve-morris-and-gred-greg-janee
- National Digital Stewardship Alliance:
<http://www.digitalpreservation.gov/ndsa>



Thanks!



Butch Lazorchak
Digital Archivist
Library of Congress
wlaz@loc.gov



http://imagecache2.allposters.com/images/pic/Matted_Prints/mp_814104_b-Man-on-Phone-Thanks-Posters.jpg