



MoMA
Digital Collections
Storage Infrastructure

A modern conservation laboratory with large windows, workbenches, and specialized equipment. The room features a high ceiling with recessed lighting and a wooden floor. A large window on the left provides a view of a city skyline. In the foreground, there is a workbench with a blue chair and a specialized lighting fixture. The background shows more workbenches and equipment, including a large crane-like structure.

Conservation

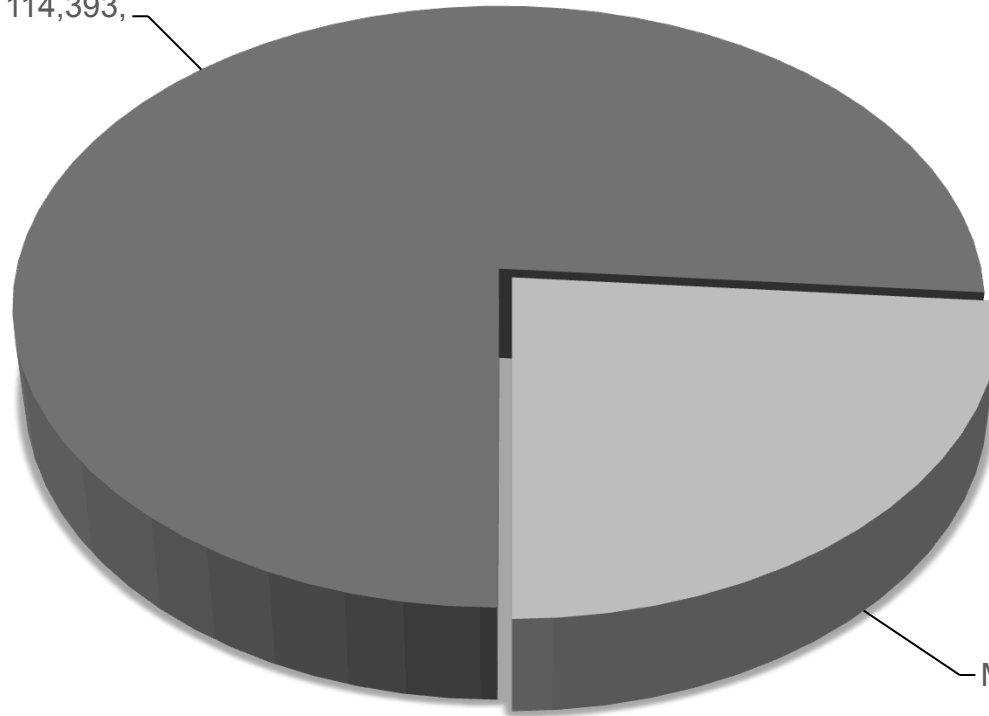
- Routine maintenance
- Repair
- Preventative conservation
- Collaboration to ensure proper handling, care and storage



Media Conservation

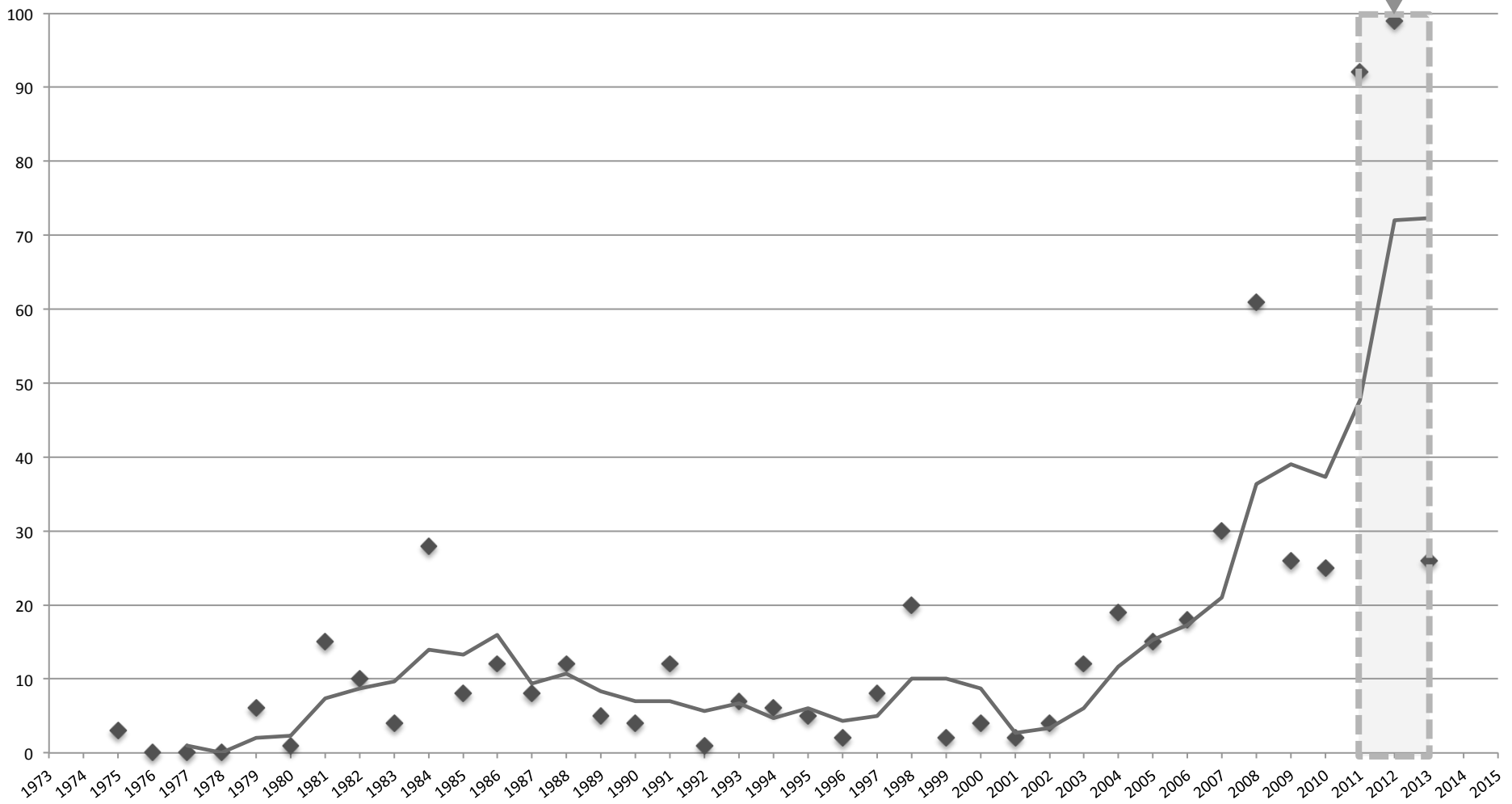


Everything else, 114,393,
76%



Media collections
(including film
department), 35,607,
24%

2011-2013: Over one thousand artworks digitized (from “zero” to 70 TB in three years)

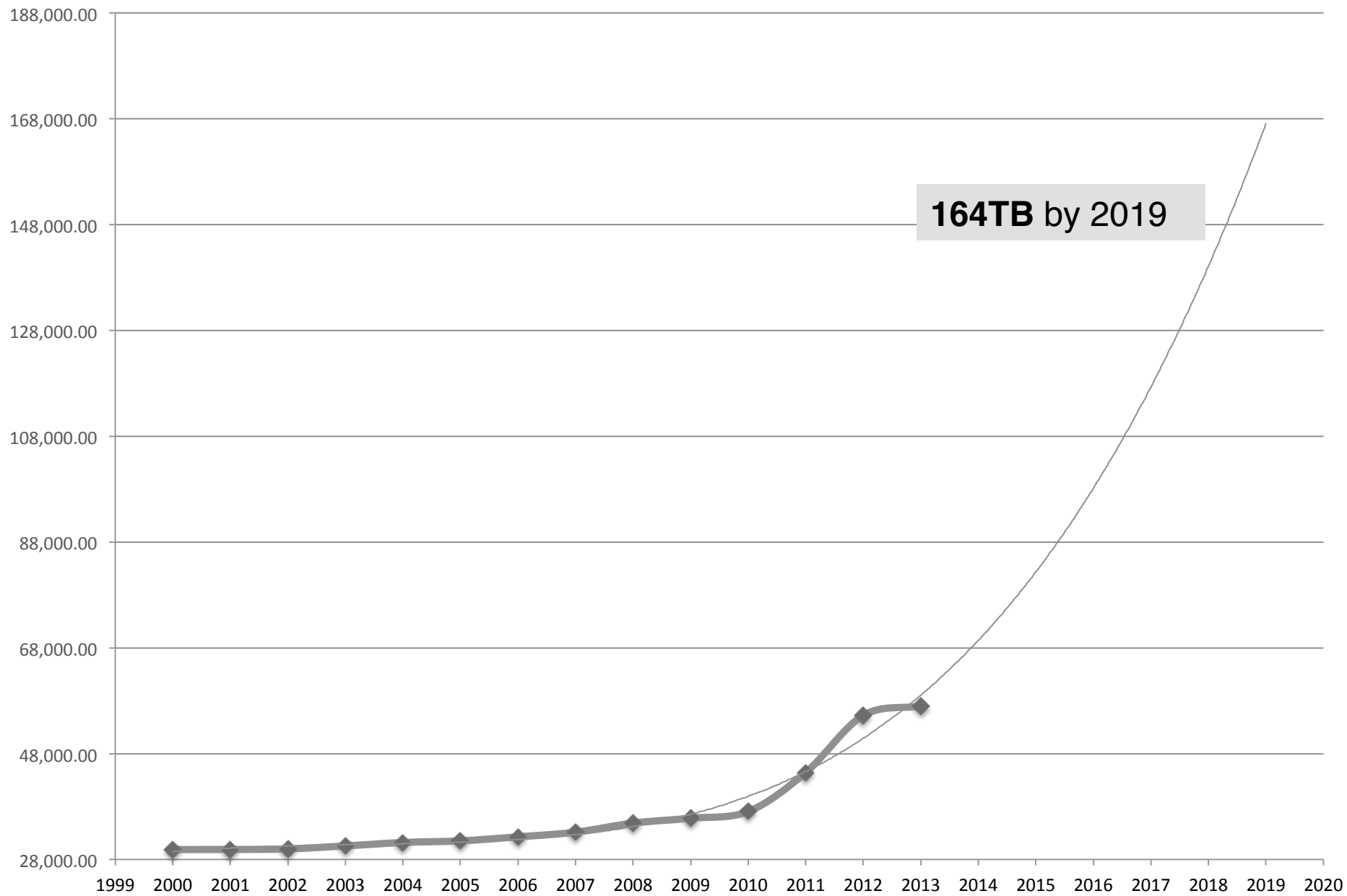




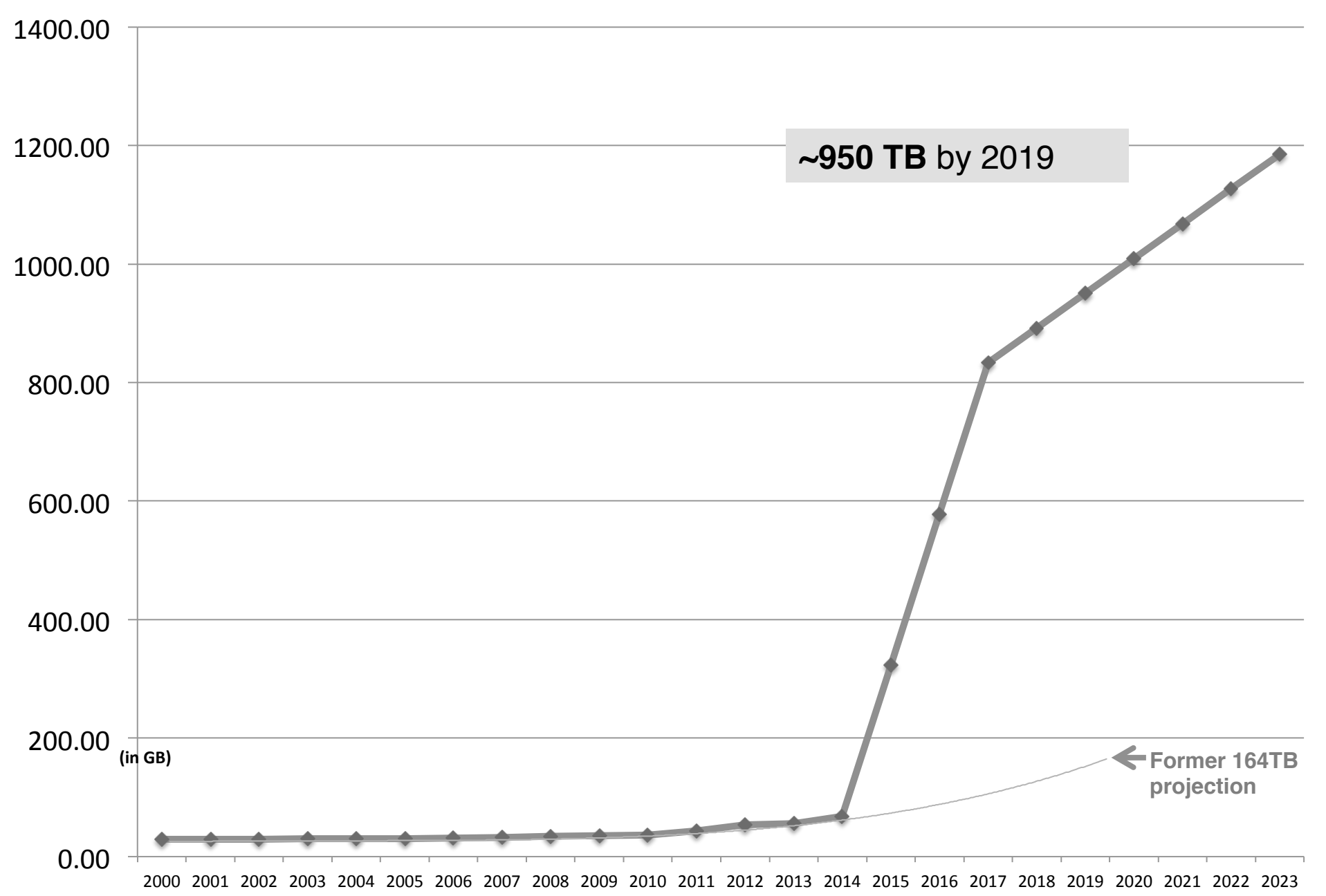
Infrastructure purchased in 2012

- Two EMC VNX5500 units
- One in Manhattan
- One in Queens
- Manhattan replicated to Queens every 15 minutes using EMC Snapreplicator
- CIFS / SMB mount
- Access limited to Media Conservation
- Strict organizational standards and naming conventions

(in GB)

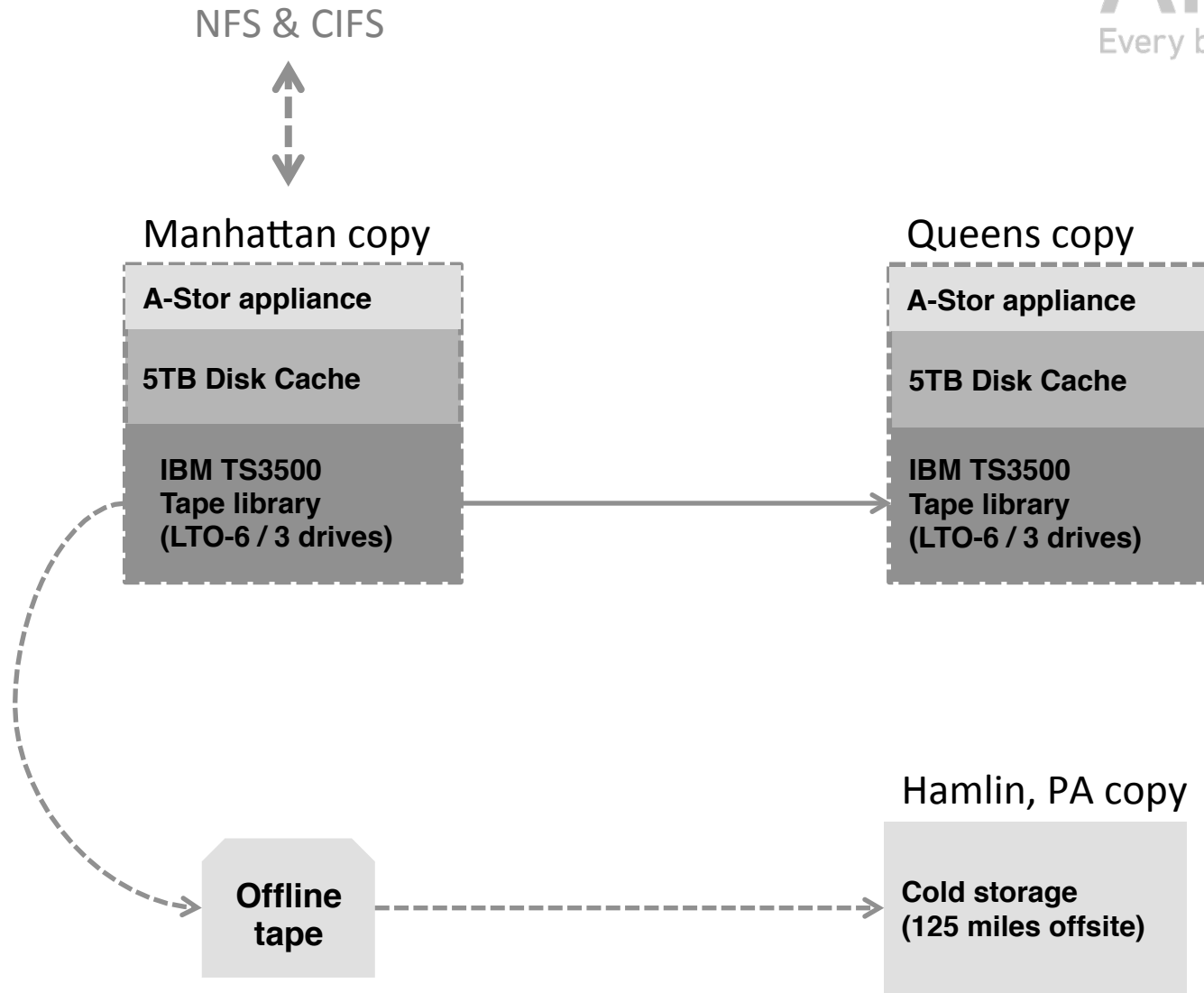


164TB by 2019

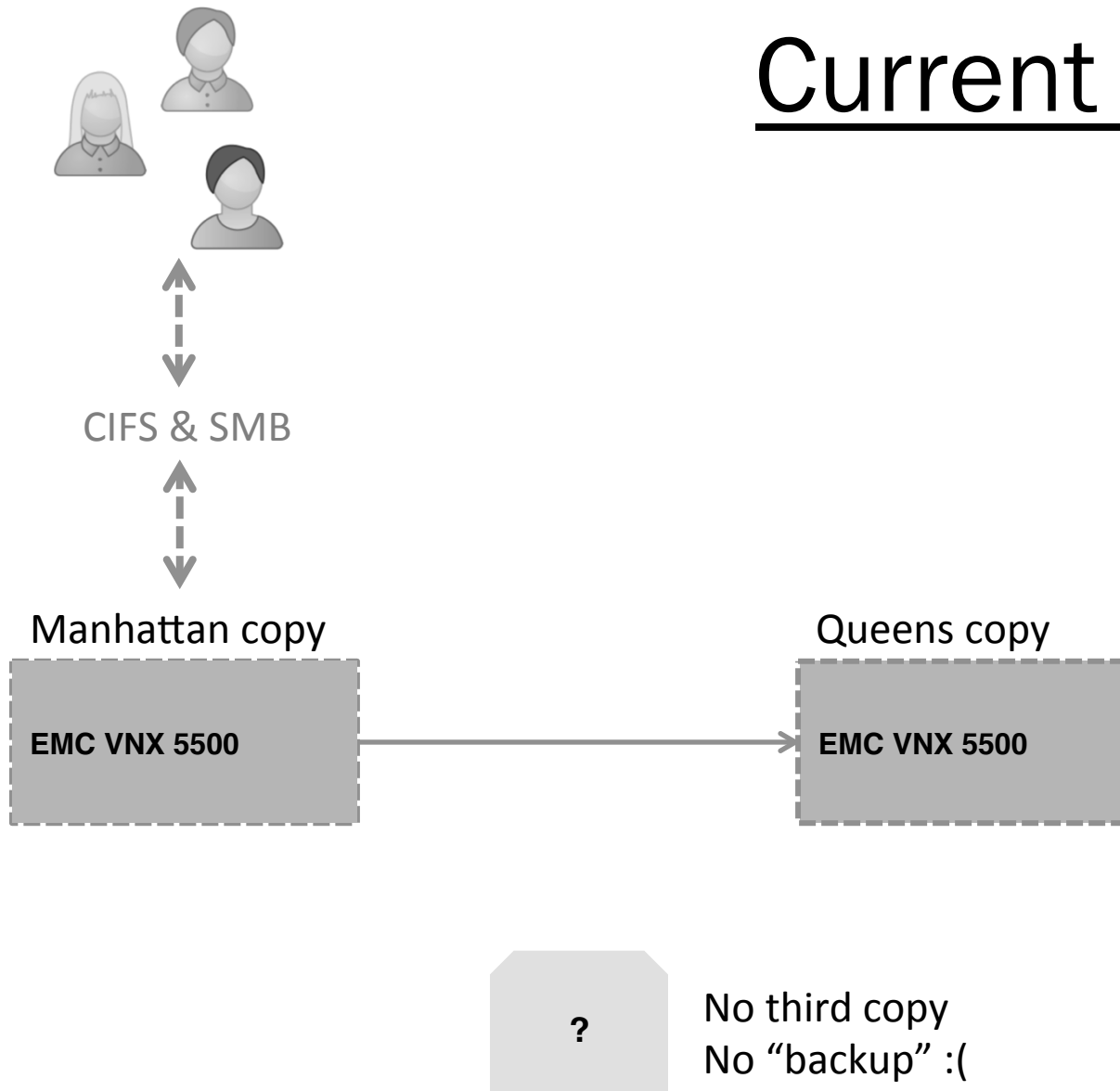


Ideal state

- Integrated off-site backup
- File-level fixity checks on all data stores
- Reporting of fixity in MoMA repository web app
- Cheaper cost per TB



Current state



Early 2015

