



WWW

How Much of the Web is Archived?*

Scott Ainsworth, Ahmed AlSum, Hany SalahEldeen,
Michele C. Weigle, Michael L. Nelson

Old Dominion University, USA

{sainswor, aalsum, hany, mweigle, mln}@cs.odu.edu

JCDL 2011, Ottawa, Canada

The image features the letters 'WWW' in a large, 3D, metallic grey font at the top. Below them is a 3D map of the world with landmasses in light blue and oceans in white. The map is positioned on a light grey surface, and the entire scene is set against a white background.

WWW

How Much of the Web is Archived?*

Scott Ainsworth, Ahmed AlSum, Hany SalahEldeen,
Michele C. Weigle, Michael L. Nelson

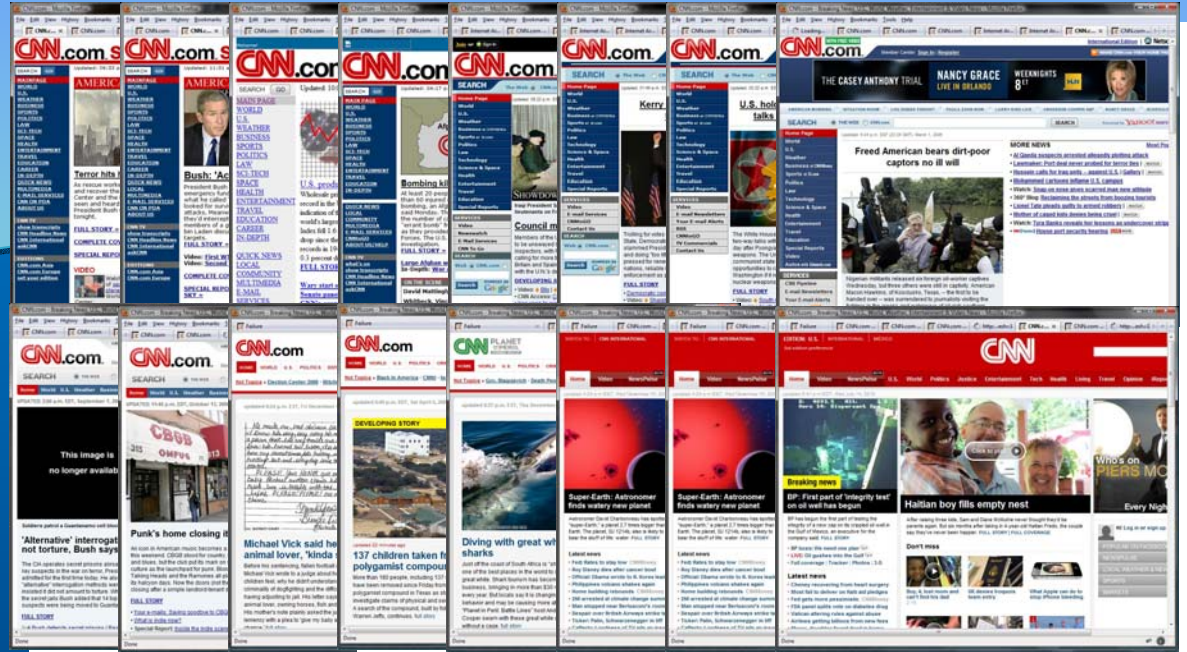
Old Dominion University, USA

{sainswor, aalsum, hany, mweigle, mln}@cs.odu.edu

JCDL 2011, Ottawa, Canada

How Many Archive Copies?

<http://www.cnn.com>



<http://cs.odu.edu/~aalsum>



Research Question

How Much of the Web is Archived?

Experiment

Sampling Techniques



- 4 Sample sets – 1000 URIs each



Sampling Techniques

DMOZ



d m o z open directory project

- All the available DMOZ history:
100 snapshots made from July 20, 2000 through October 3, 2010
- Remove duplicates, non-HTTP, invalid URIS
- Randomly selected 1000 URIs

HTTP Status	#
200	507
3xx→200	192
3xx→ Others	50
4xx	135
5xx	4
Timeout	112



Indexed by:	bing	YAHOO!	Google ^{API}	Google ^{API + Web}
	49%	41%	30%	54%

Sampling Techniques

Delicious



- We used Delicious Recent random URI generator (<http://www.delicious.com/recent/?random=1>) on Nov. 22, 2010 to get 1000 URIs.

HTTP Status	#
200	958
3xx→200	27
3xx→ Others	1
4xx	8
5xx	3
Timeout	3

Indexed by:

bing

95%

YAHOO!

86%

Google

88%

Google API + Web

95%

Sampling Techniques

Bitly



- Bitly URI consists of a 1–6 character, alphanumeric hash value appended to <http://bit.ly/>
- Random hash values were created and dereferenced until 1,000 target URIs were discovered

HTTP Status	#
200	488
3xx→200	243
3xx→ Others	36
4xx	197
5xx	6
Timeout	30



Indexed by:	bing	YAHOO!	Google ^{API}	Google ^{API + Web}
	21%	22%	24%	30%

Sampling Techniques

Search Engine



- Random Sample from Search Engine technique [Bar-Yossef 2008]
- The phrase pool was selected from the 5-grams in Google's N-gram data.
- A random sample of these queries was used to obtain URIs, of which 1,000 were selected at random.

HTTP Status	#
200	943
3xx→200	17
3xx→ Others	3
4xx	16
5xx	0
Timeout	21

Indexed by:	bing	YAHOO!	Google ^{API}	Google ^{API + Web}
	55%	98%	70%	73%

Experiment







- For each sample set, we used Memento Aggregator to get all the possible archived copies (Mementos).
- For each URI, Memento Aggregator responded with TimeMap for this URI.

Example

```
<http://memento.waybackmachine.org/memento/20010819194233/http://jcdl2002.org>;rel="first memento";datetime="Sun, 19 Aug 2001 19:42:33 GMT",  
<http://memento.waybackmachine.org/memento/20011216220248/http://jcdl2002.org>; rel="memento"; datetime="Sun, 16 Dec 2001 22:02:48 GMT",
```

Results



#Mementos				
0 (Not archived)	10%	3%	65%	22%
1	4%	8%	10%	34%
2–5	14%	48%	17%	32%
6–10	9%	4%	2%	4%
More than 10	63%	37%	6%	8%

Archive categories



We have 3 categories of archives

- **Internet Archive** (classic interface)



- **Search engine**



- **Other archives**



WebCite

archiefweb.eu



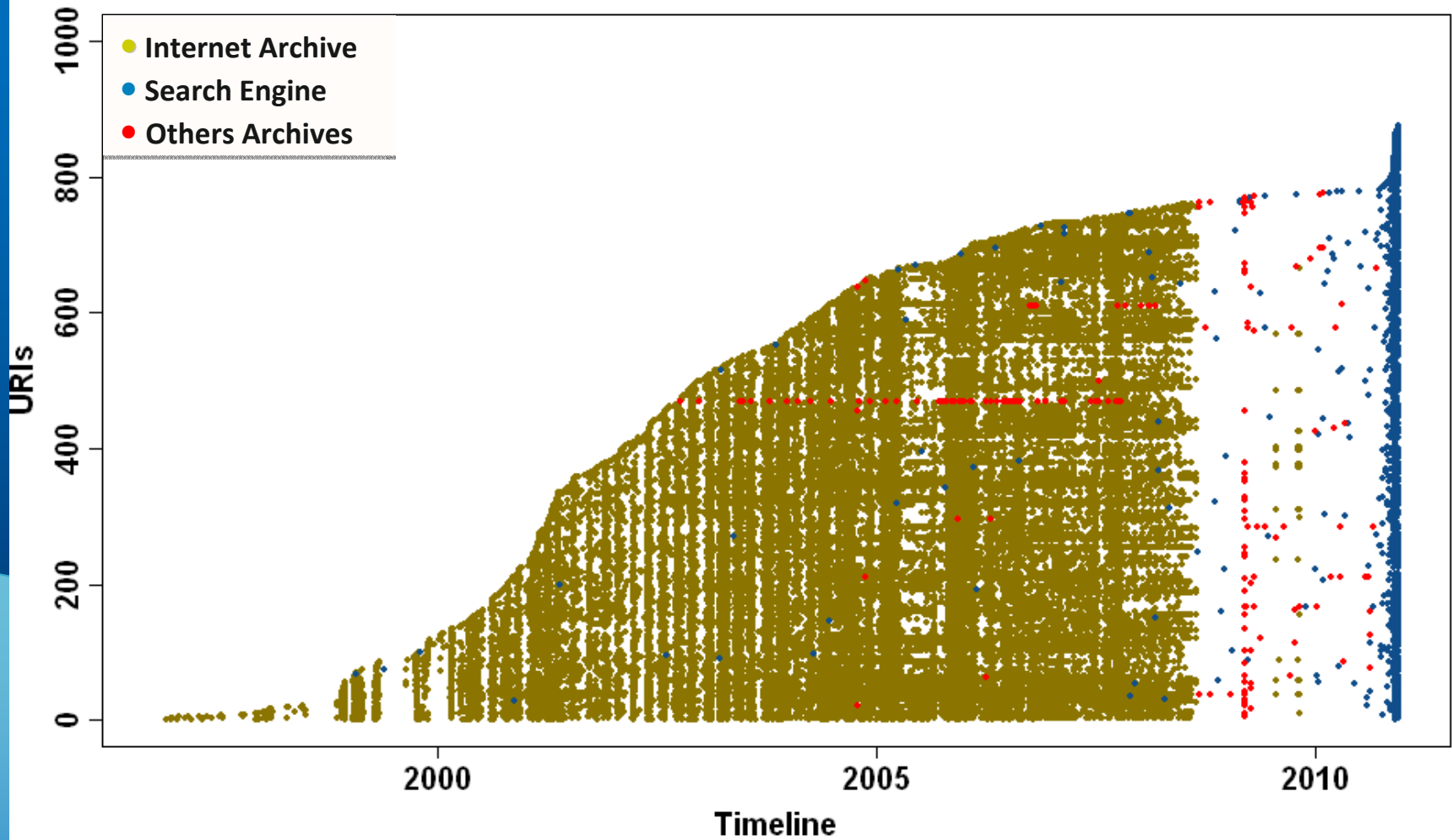
The National Archives

UK

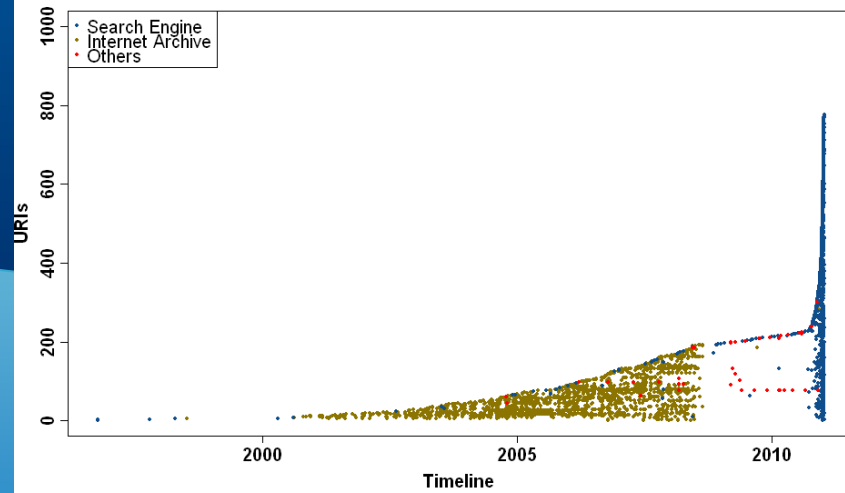
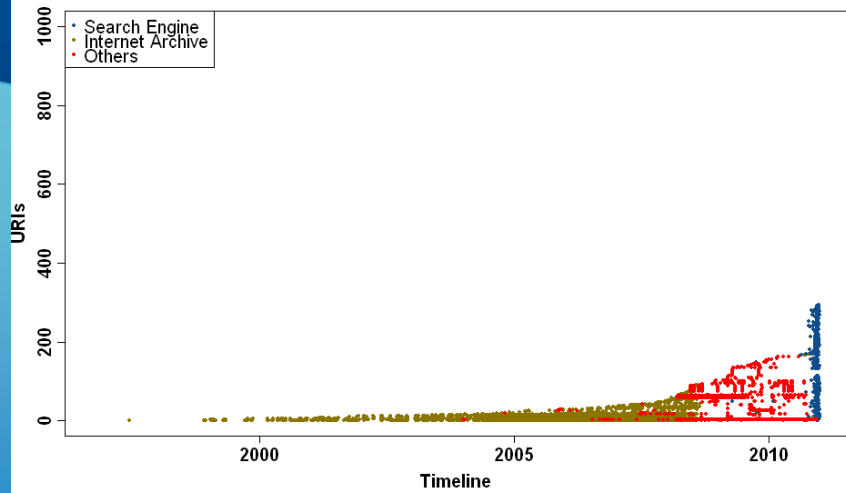
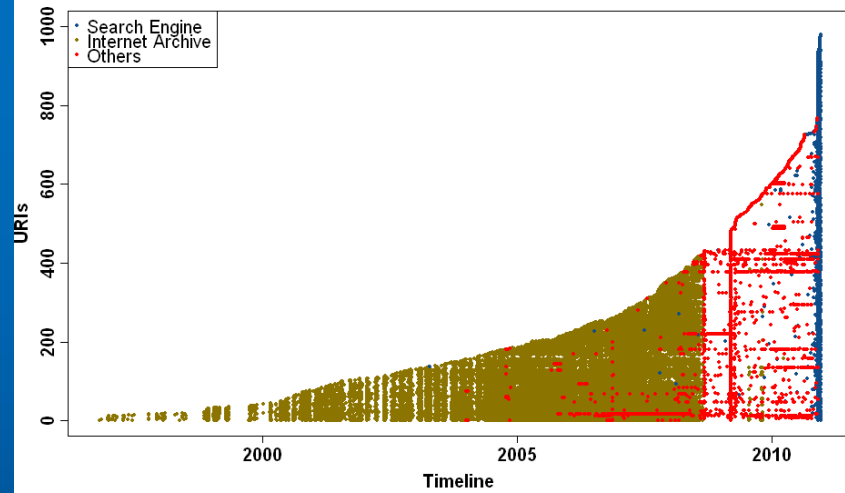
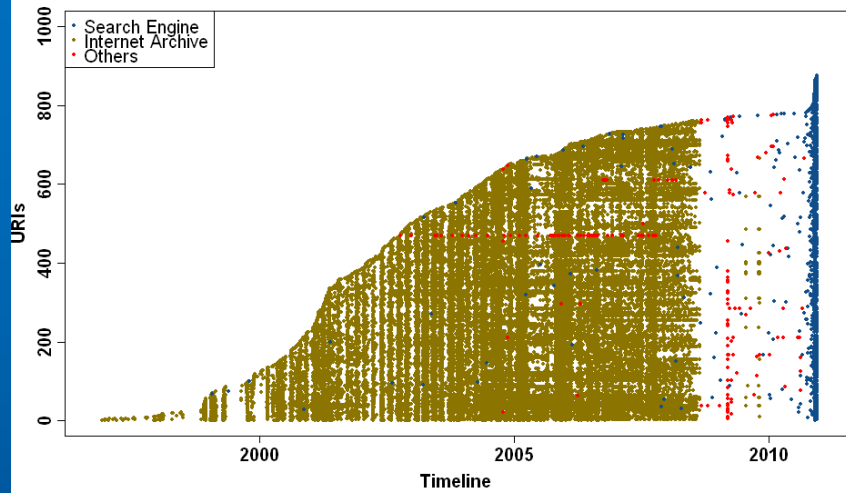
NATIONAL ARCHIVES

US

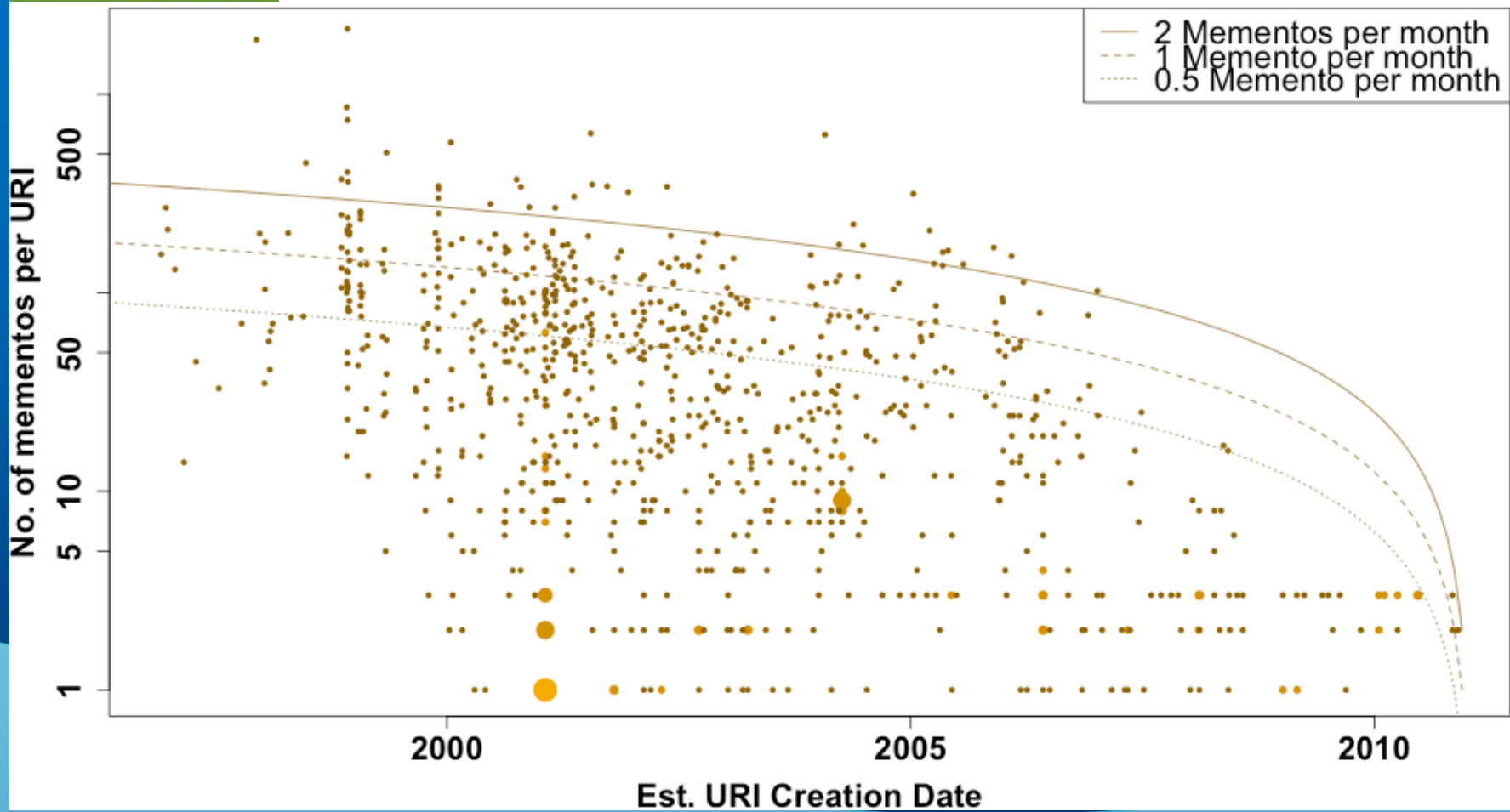




Memento Distribution, ordered by the first observation date.



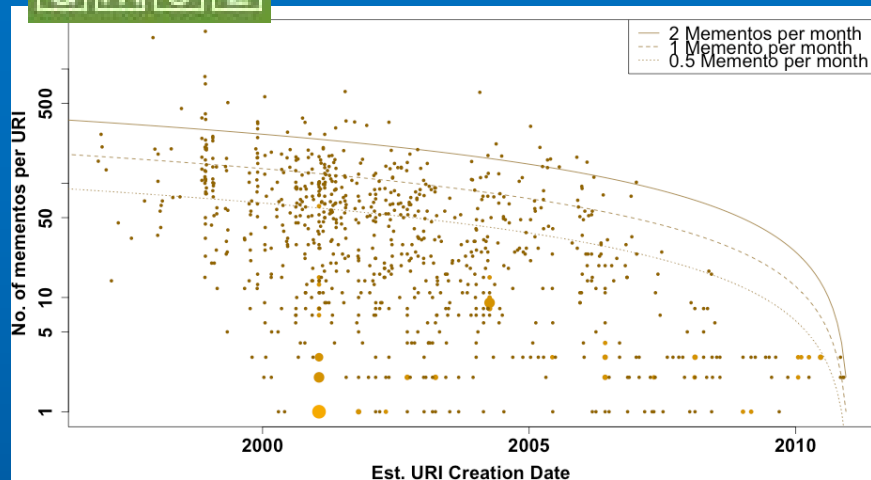
Memento Distribution, ordered by the first observation date.



(14.6% archived \geq once per month)

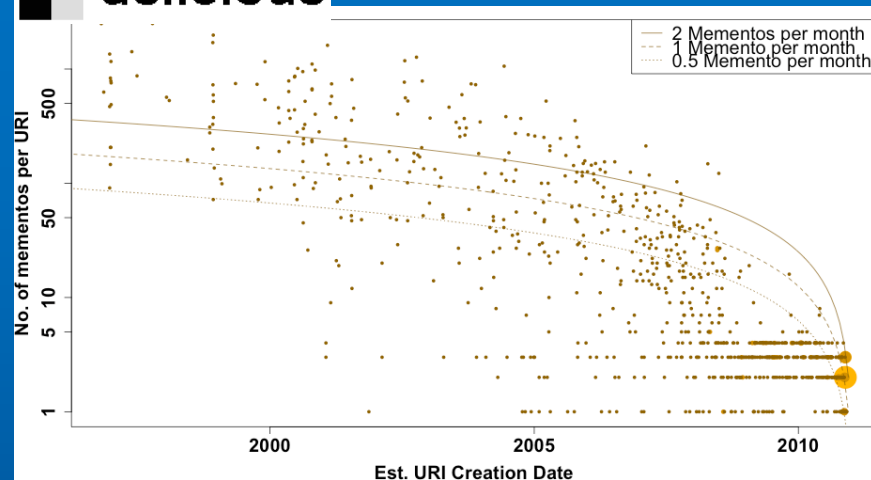
How often are URIs archived?

dmorz



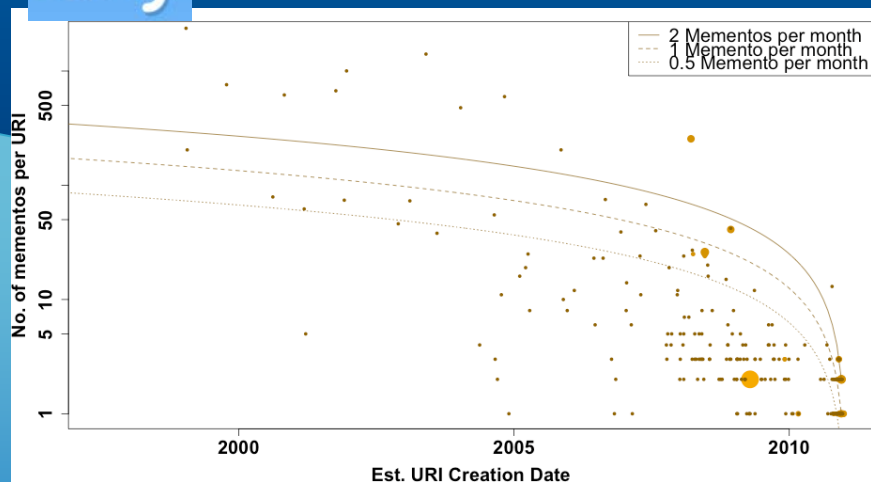
(14.6% archived \geq once per month)

delicious



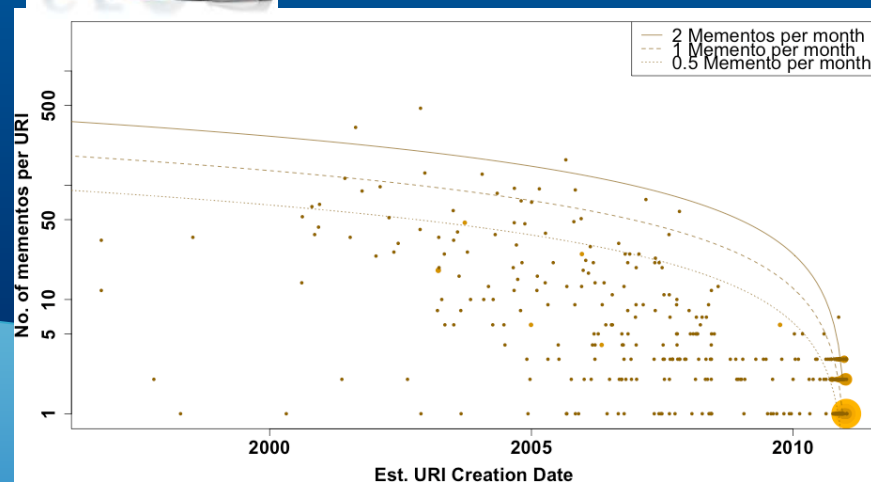
(31% archived \geq once per month)

bitly



(14.7% archived \geq once per month)

SE YAHOO!



(28.7% archived \geq once per month)

How often are URIs archived?

Analysis







- What affects the archival rate?
 - URI source (More popular – More archival)
 - BackLinks (Weak positive relationship)
- Archive Coverage
 - Internet Archive (Best)
 - Search Engine (Good), but only one copy.
 - The other archives cover only a small fraction with recent copies.

Conclusion

How much of the Web is Archived?



- Tell me what is your URI source!!

	Including SE cache	Excluding SE Cache
	90%	79%
	97%	68%
	35%	16%
	88%	19%

References



- Ziv Bar-Yossef and Maxim Gurevich. Random sampling from a search engine's index. *J. ACM*, 55(5), 2008.
- Frank McCown and Michael L. Nelson. Characterization of search engine caches. In *Proceedings of IS&T Archiving 2007*, May 2007.
- Herbert Van de Sompel, Michael Nelson, and Robert Sanderson. HTTP framework for time-based access to resource states — Memento, November 2010. <http://datatracker.ietf.org/doc/draft-vandesompelmemento/>.

Thank You

Contact:

Ahmed AlSum

aalsum@cs.odu.edu