



The Zooniverse

Unlock Your Data through People-Powered Research

[Galaxy Tutorial](#)[Galaxy Analysis](#)

Galaxy Analysis

Welcome to Galaxy Zoo's view of the Universe. If you're here you should already have seen the [Tutorial](#), but feel free to go and remind yourself. There's no need to agonise for too long over any one image, just make your best guess in each case.



Show Grid Overlay on the next Image

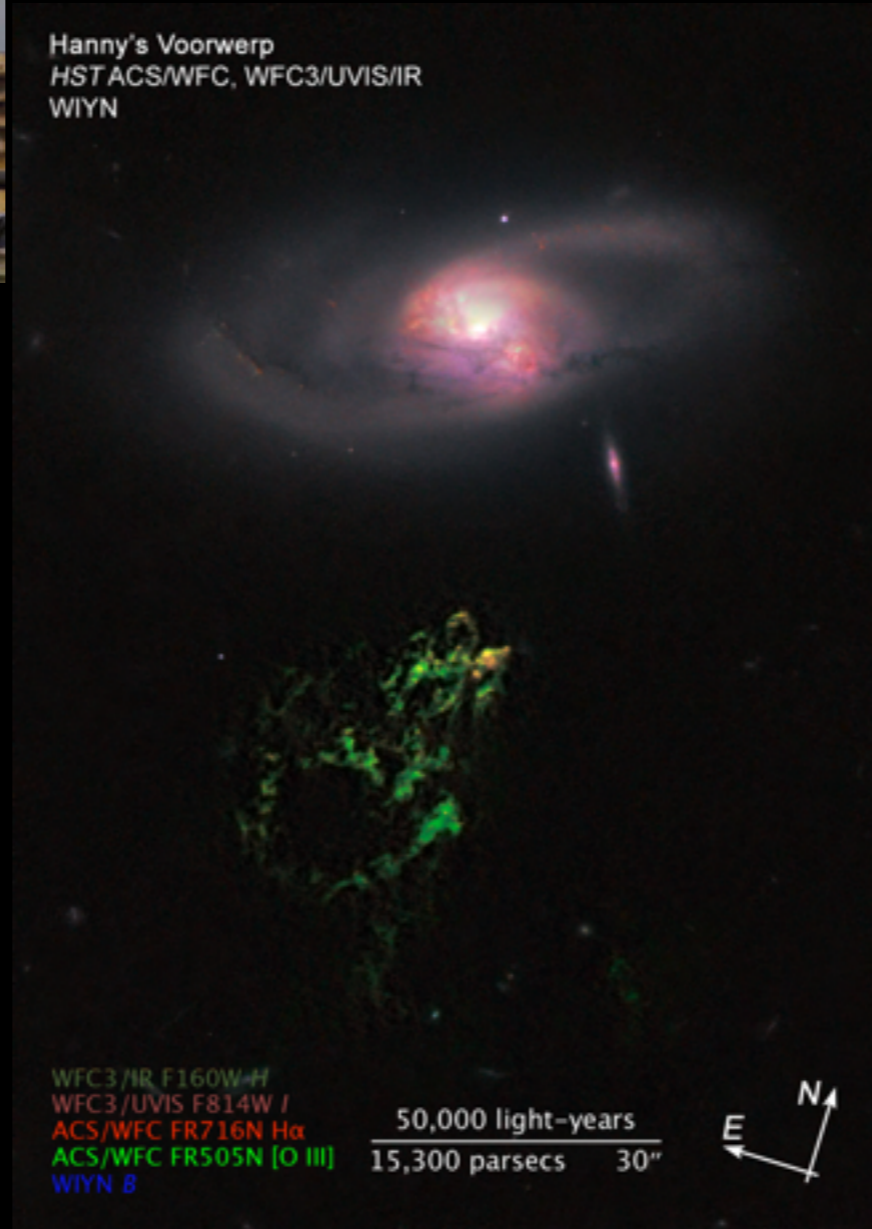
Galaxy Ref:
588010880371851294

Choose the Galaxy Profile
by clicking the buttons
below





Hanny's Voorwerp
HST ACS/WFC, WFC3/UVIS/IR
WIYN

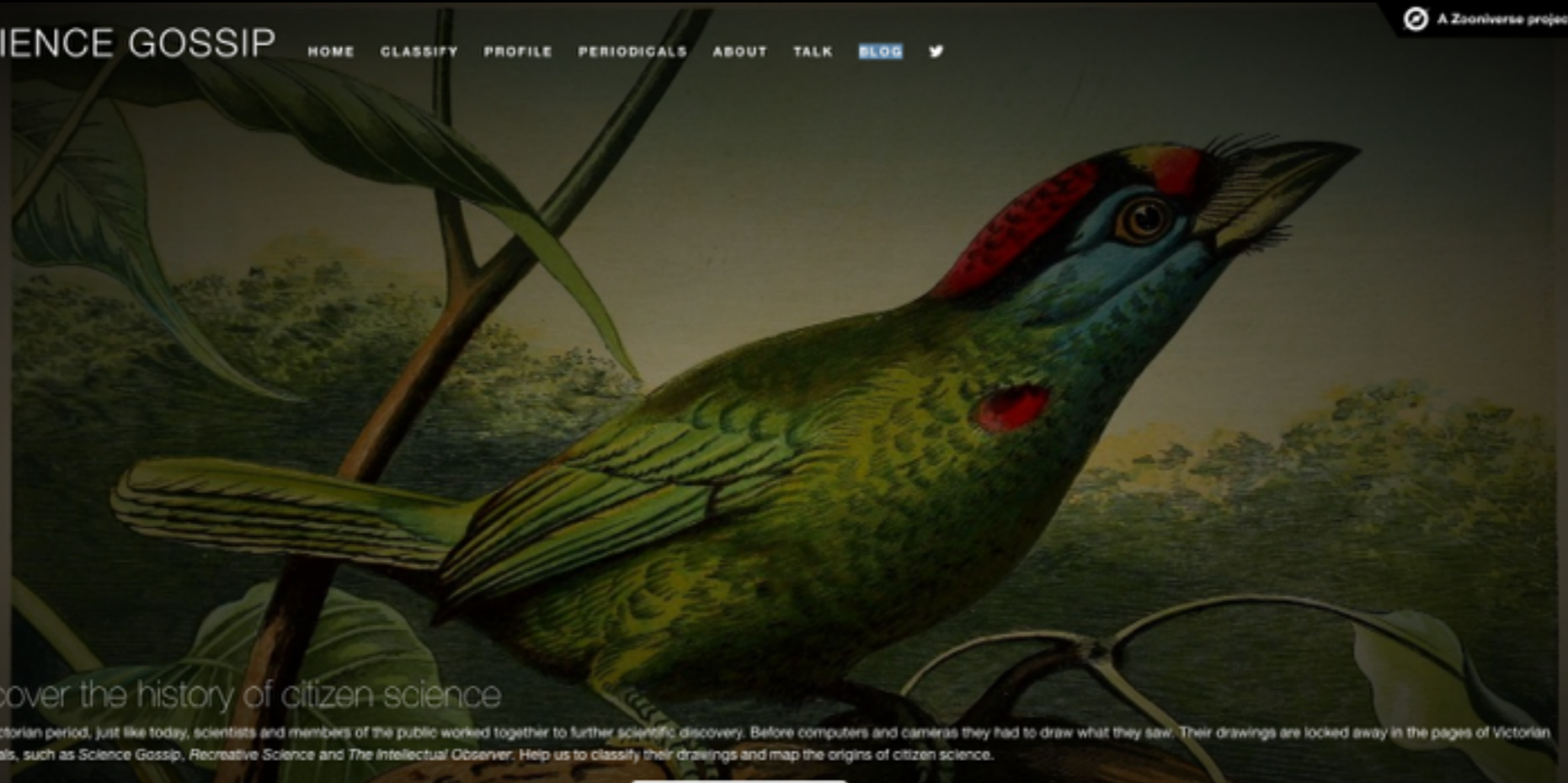


Researchers and
Experts



Credit: Lisa Notermans.

Volunteers



Uncover the history of citizen science

In the Victorian period, just like today, scientists and members of the public worked together to further scientific discovery. Before computers and cameras they had to draw what they saw. Their drawings are locked away in the pages of Victorian periodicals, such as *Science Gossip*, *Recreative Science* and *The Intellectual Observer*. Help us to classify their drawings and map the origins of citizen science.

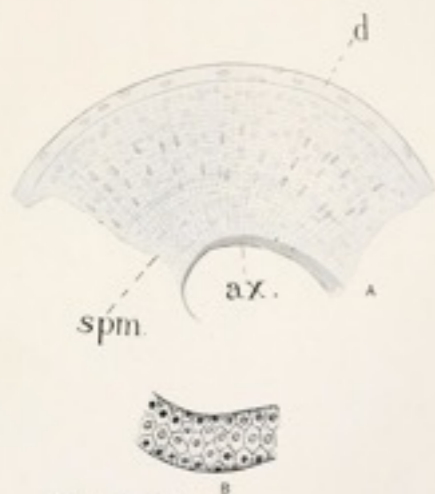
147631 PAGES COMPLETED

Get started!

8846 VOLUNTEERS PARTICIPATING

Journ. Q.M.C.

Ser. 2, Vol. XII, Pl. 30.



MARY HENNES, del. and sculp.

ANATOMY OF THE RAT-FLEA.

150,000 pages from 19th-century journals

previously uncredited women engravers and illustrators



A. T. DINEY, DEL.

Parts of the Cotton Worm.

PENGUIN WATCH

Hide old marks Restart tutorial

2013-02-20 2:00:00 PM T 12°C



HC500 HYPERFIRE

BACK

For each type of animals in the image, select it from the list, then click to mark its center.

- Adults 11
- Chicks
- Eggs
- Other

OK



SNAPSHOT SERENGETI

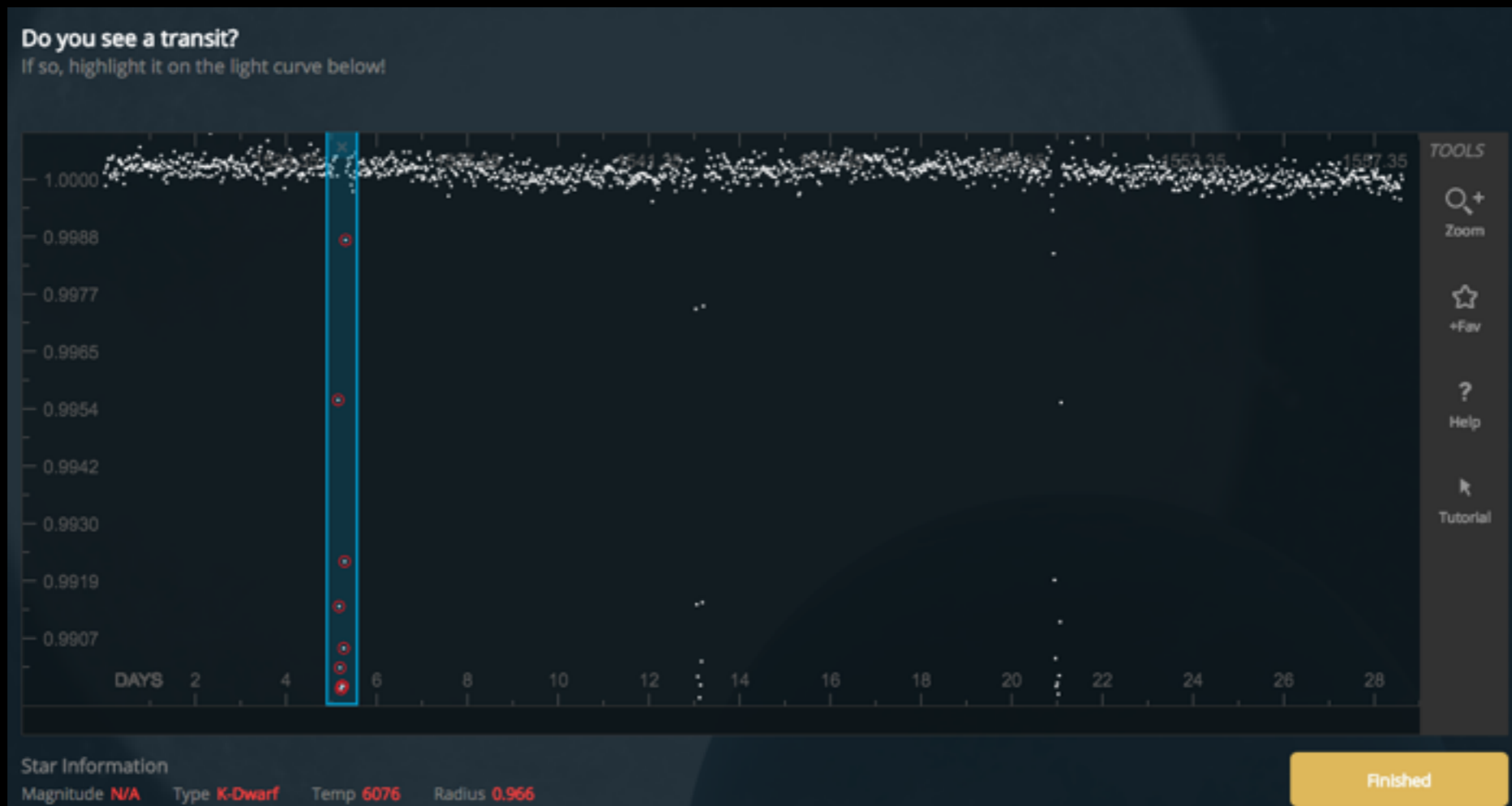
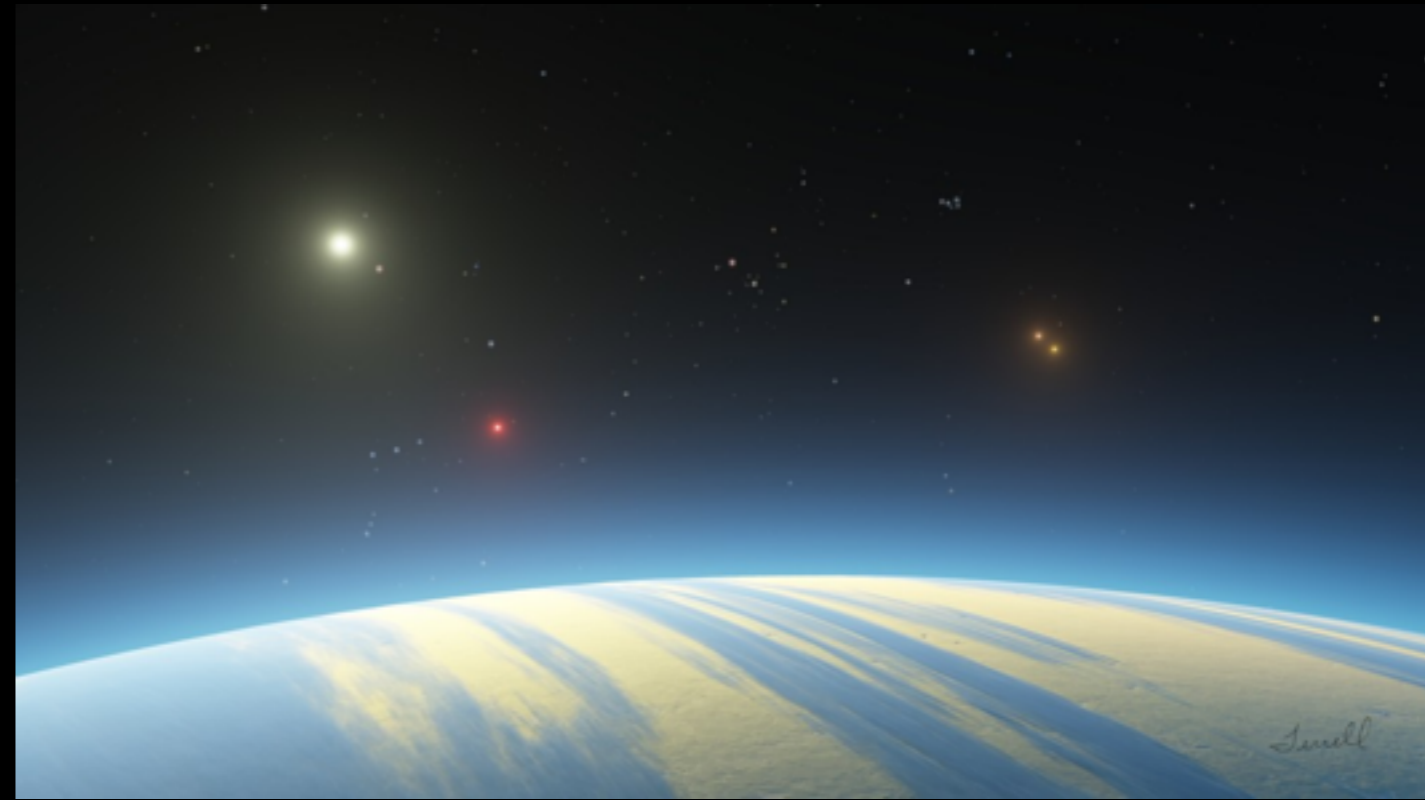


Looks like ▾

Pattern	Color	Horns	Tail	Build
Aardvark	Genet		Porcupine	
Aardwolf	Giraffe		Reedbuck	
Baboon	Guinea fowl		Reptiles	
Bat	Hare		Rhinoceros	
Bat-eared fox	Hartebeest		Rodents	
Bird (other)	Hippopotamus		Secretary bird	
Buffalo	Honey-badger		Serval	
Bushbuck	Hyena (spotted)		Steenbok	
Cattle	Hyena (striped)		Topi	
Caracal	Impala		Vervet monkey	
Cheetah	Insect/Spider		Vulture	
Civet	Jackal		Warthog	
Dik dik	Kori bustard		Waterbuck	
Duiker	Leopard		Wildcat	
Eland	Lion (female or cub)		Wildebeest	
Elephant	Lion (male)		Zebra	
Gazelle (Grant's)	Mongoose		Zorilla	
Gazelle (Thomson's)	Ostrich		Human	

[Tutorial](#) [Clear filters](#)

Planet Hunters



[Rotate left](#)[Rotate right](#)[Centre](#)[A Annotate Text](#)[Annotate Image](#)[View Original](#)[Tutorial](#)[Next](#)

then the free movable ~~object~~ "separate object"
can become an invaluable ^{free + movable} part of the
creative ^{imaginative} changing & interchanging life within
this plastic reality, just as a pebble or a
flower can be

Shakespeare's World

160

The making of Doctor Stephens water, it is good
for the Gowte, the Palsye the Toothache and
for all diseases that come of Rheume.

Lake of Rosemary, Sage, wilde Thime, Pellitory of the wall

Transcribe text

Lake of Rosemary, Sage, wilde Thime, Pellitory of the wall

Expansion

Insertion

Deletion

Unclear

Superscript

Marginalia

w^{ch}

wth, w^t

y^e

y^t

y^m

yo^r, y^r

Ma^{tie}

Wor^{ll}

La:, La^p

L:, L^p

S^r

o^r

Ex^t, Exaite

ltm, it

lre

Ho:, hono^{ble}

esq.

es

m^t

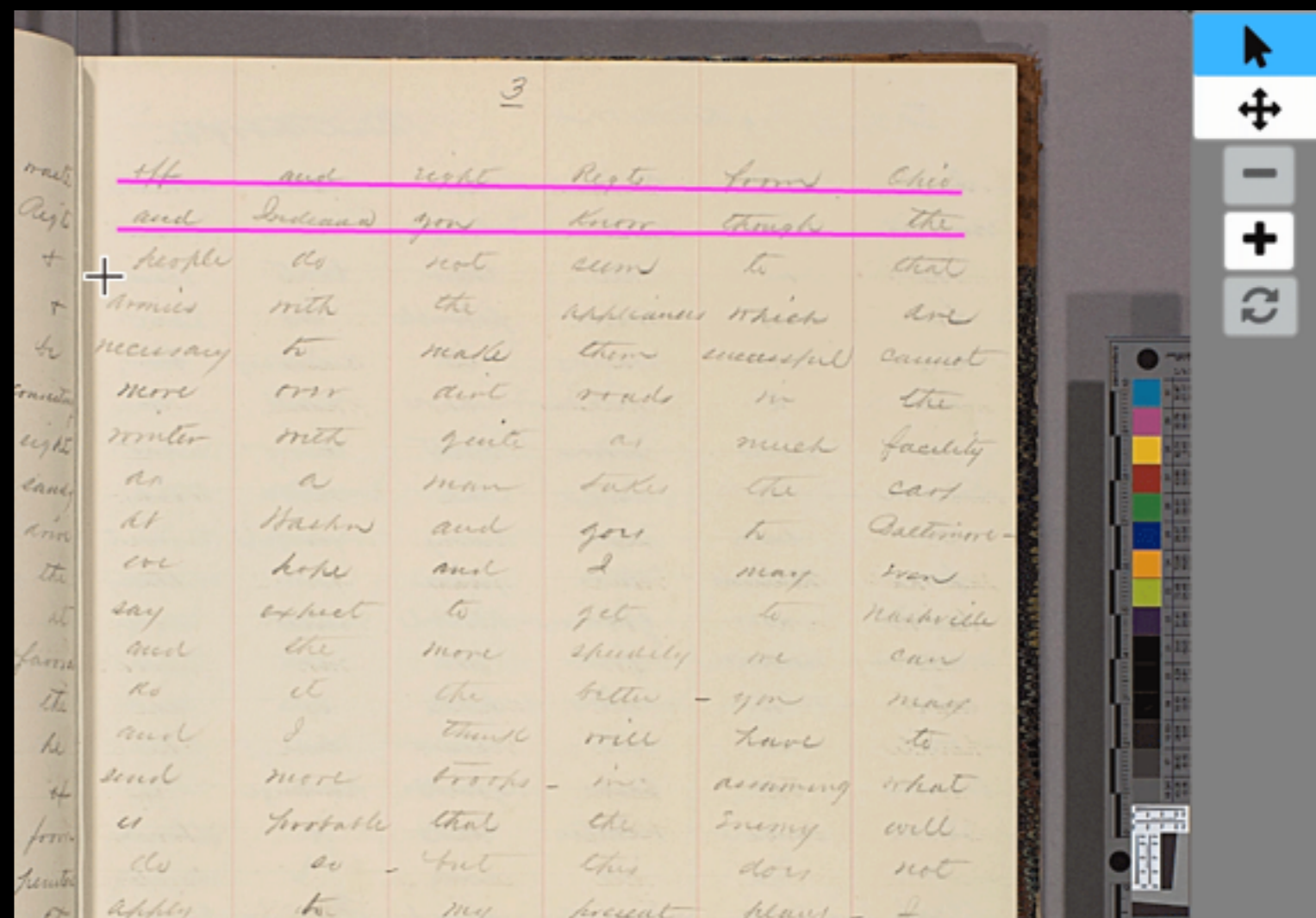
p^d

A^o

Save Changes

Enter to save and close, Esc to close without saving

Decoding the Civil War



Images from:



PROJECT #2994

[Project details](#)

[About](#)

[Collaborators](#)

[Field guide](#)

[Tutorial](#)

[Mini-course](#)

[Media](#)

[Visibility](#)

[Talk](#)

[Data Exports](#)

WORKFLOWS

[Template_Butterflies](#)

Template_Herbarium

[Template_Herbarium3](#)

[Template_Pinned Specimen](#)

[New workflow](#)

SUBJECT SETS

[Test Butterfly Subject Set](#)

[Test Herbarium Subject Set](#)

[Test Pinned Specimen Subject Set](#)

[New subject set](#)

NEED SOME HELP?

[Read a tutorial](#)

[Ask for help on talk](#)

OTHER ACTIONS

Template_Herbarium #2339

A workflow is the sequence of tasks that you're asking volunteers to perform. For example, you might want to ask volunteers to answer questions about your images, or to mark features in your images, or both.

If you have multiple workflows you can rearrange the order in which they are listed on your project's front page by clicking and dragging on the left gray tab next to each workflow title in the left menu bar.

WORKFLOW TITLE

Template_Herbarium

If you let your volunteers choose which workflow to attempt, this text will appear as an option on the project front page.

TASKS

Geographic Location (first)

Scientific Name

Location

Habitat & Description

3-task combo

Collected By

Collector Number

Month

Day

Year

5-task combo

[Add a task](#)



Question



Drawing



Text



Survey



Crop



Dropdown



Combo

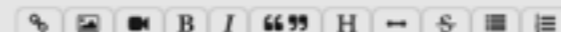
question or mark an image. Add a task by clicking the question or marking buttons below.

MAIN TEXT

Geographic Location

Describe the task, or ask the question, in a way that is clear to a non-expert. You can use markdown to format this text.

HELP TEXT



****The country, state, and county in which the specimen was collected. Select the appropriate value in the drop-downs, starting with country. Note that the country may not be explicitly stated**

Add text and images for a help window.

DROPDOWNS

Country

State/Province (dep. on Country)

County (dep. on State/Province)

Dropdown

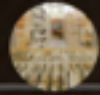
Dependent On

County

NEXT TASK

3-task combo

Notes from Nature



VISIT NOTES FROM NATURE

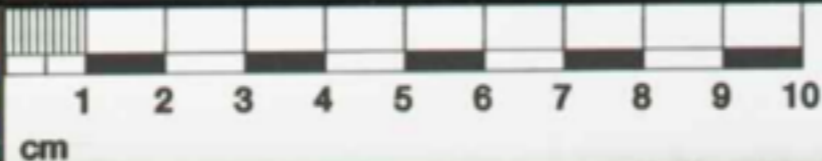
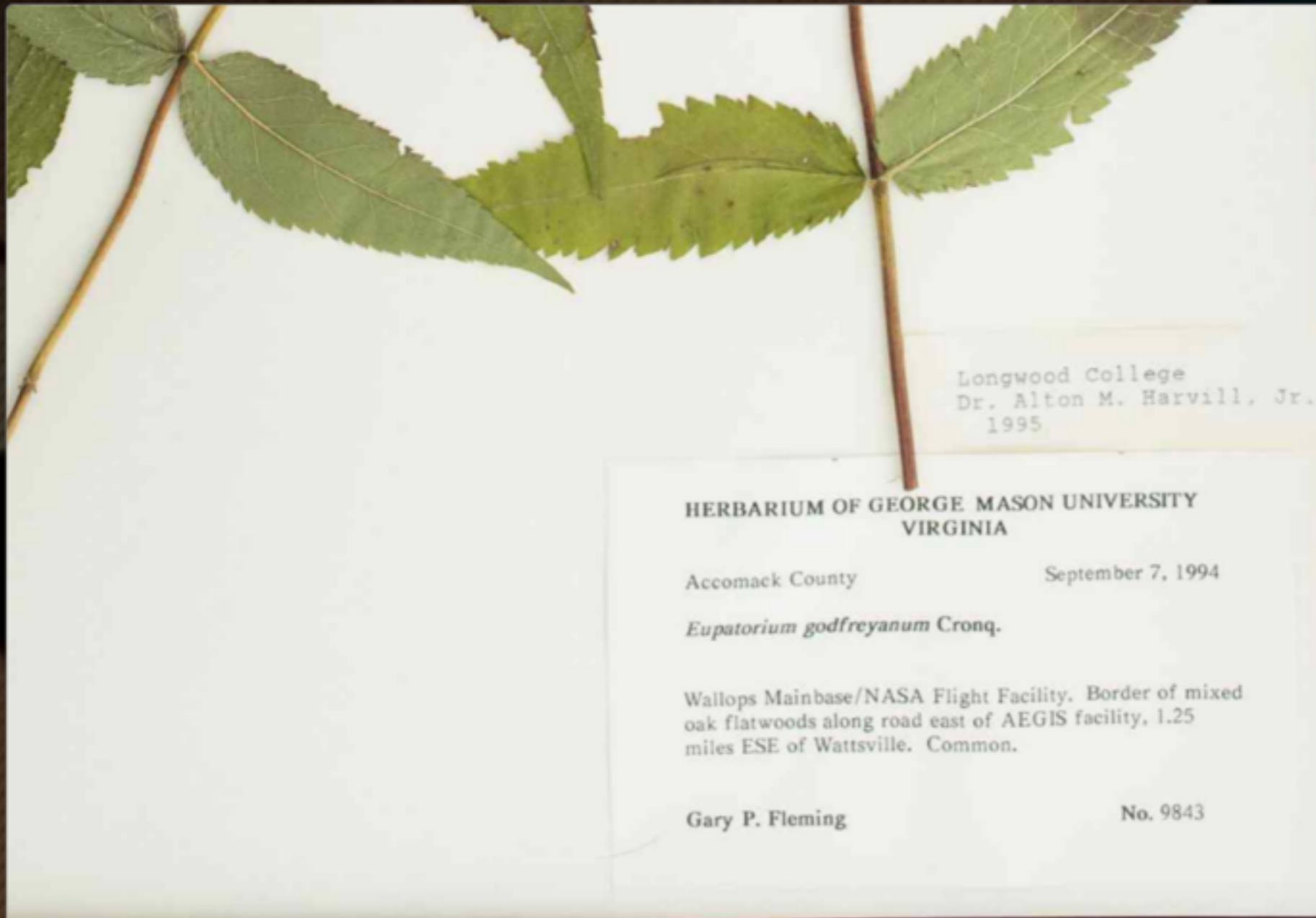
CLASSIFY

TALK

COLLECT

BLOG

FIELD BOOK



Collected By

Gary P. Fleming

Need some help with this task?

Collector Number

9843

Need some help with this task?

Month

9 - September

Day

7

Year

1994

Need some help with this task?

Back

Done & Talk

Done



Show the project tutorial



@the_zooniverse



zooniverse.org

Unlock Your Data through People-Powered Research